

## GCET1 antibody

Cat. No. GTX04610

Host	Rabbit
Clonality	Polyclonal
Isotype	IgG
Applications	IHC-P, FCM
Reactivity	Human

Package  
400 µl

## Applications

## Application Note

\*Optimal dilutions/concentrations should be determined by the researcher.

Suggested dilution	Recommended dilution
IHC-P	1:10-1:50
FCM	1:10-1:50

Not tested in other applications.

## Properties

Form	Liquid
Buffer	PBS
Preservative	0.09% sodium azide
Storage	Store as concentrated solution. Centrifuge briefly prior to opening vial. For short-term storage (1-2 weeks), store at 4°C. For long-term storage, aliquot and store at -20°C or below. Avoid multiple freeze-thaw cycles.
Concentration	Batch dependent (Please refer to the vial label for the specific concentration.)
Immunogen	A KLH conjugated synthetic peptide between 194-222 amino acids from the Central region of human SERPINA9.
Purification	Protein A purified followed by peptide affinity purification
Conjugation	Unconjugated

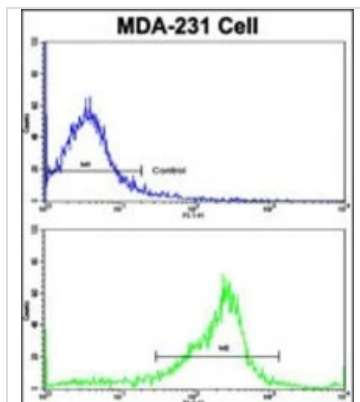
## Note

For laboratory research use only. Not for any clinical, therapeutic, or diagnostic use in humans or animals. Not for animal or human consumption.

Purchasers shall not, and agree not to enable third parties to, analyze, copy, reverse engineer or otherwise attempt to determine the structure or sequence of the product.



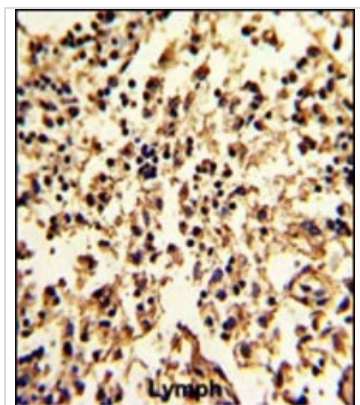
For full product information, images and publications, please visit our [website](#).

**DATA IMAGES**

**GTX04610 FCM Image**

FACS analysis of MDA-MB-231 cells using GTX04610 GCET1 antibody.

Green : Primary antibody

Blue: Negative control


**GTX04610 IHC-P Image**

IHC-P analysis of human lymph tissue using GTX04610 GCET1 antibody.



For full product information, images and publications, please visit our [website](https://www.genetex.com).