

SLC26A5 antibody

Cat. No. GTX04614

Host	Rabbit
Clonality	Polyclonal
Isotype	IgG
Applications	WB, IHC-P
Reactivity	Human

Package
100 µl

Applications

Application Note

*Optimal dilutions/concentrations should be determined by the researcher.

Suggested dilution	Recommended dilution
WB	Assay dependent
IHC-P	Assay dependent

Not tested in other applications.

Calculated MW 81 kDa. ([Note](#))

Properties

Form	Liquid
Buffer	PBS, 2% sucrose
Preservative	0.09% sodium azide
Storage	Store as concentrated solution. Centrifuge briefly prior to opening vial. For short-term storage (1-2 weeks), store at 4°C. For long-term storage, aliquot and store at -20°C or below. Avoid multiple freeze-thaw cycles.
Concentration	1 mg/ml (Please refer to the vial label for the specific concentration.)
Immunogen	A synthetic peptide directed towards the middle region of human SLC26A5: FSVTISMAKTLANKHGYQVDGNQELIALGLCNSIGSLFQTFISCSLSRS
Purification	Protein A purified
Conjugation	Unconjugated

Note

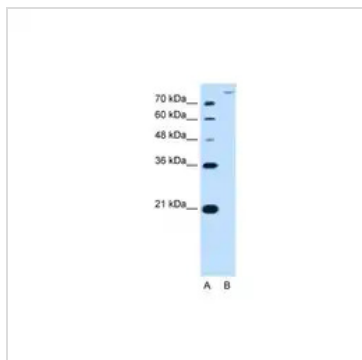
For laboratory research use only. Not for any clinical, therapeutic, or diagnostic use in humans or animals. Not for animal or human consumption.

Purchasers shall not, and agree not to enable third parties to, analyze, copy, reverse engineer or otherwise attempt to determine the structure or sequence of the product.



For full product information, images and publications, please visit our [website](#).

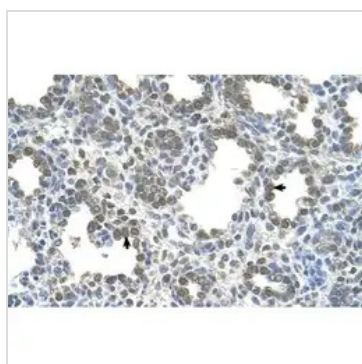
DATA IMAGES



GTX04614 WB Image

WB analysis of HepG2 whole cell lysate using GTX04614 SLC26A5 antibody.

Dilution : 2.5 µg/mL



GTX04614 IHC-P Image

IHC-P analysis of human lung tissue using GTX04614 SLC26A5 antibody.



For full product information, images and publications, please visit our [website](https://www.genetex.com).