

Pannexin 1 antibody

Cat. No. GTX04619

Host	Rabbit
Clonality	Polyclonal
Isotype	IgG
Applications	WB, IHC (Free Floating)
Reactivity	Human, Mouse, Rat

Package
50 µl

Applications

Application Note

*Optimal dilutions/concentrations should be determined by the researcher.

Suggested dilution	Recommended dilution
WB	Assay dependent
IHC (Free Floating)	Assay dependent

Not tested in other applications.

Calculated MW 48 kDa. ([Note](#))

Properties

Form	Liquid
Buffer	PBS, 1% BSA
Preservative	0.05% Sodium azide
Storage	Store as concentrated solution. Centrifuge briefly prior to opening vial. For short-term storage (1-2 weeks), store at 4°C. For long-term storage, aliquot and store at -20°C or below. Avoid multiple freeze-thaw cycles.
Concentration	0.8 mg/ml (Please refer to the vial label for the specific concentration.)
Immunogen	Peptide (C)KEPTEPKFKGLRLE, corresponding to amino acid residues 18- 31 of human PANX1 (Accession Q96RD7).
Purification	Purified by antigen-affinity chromatography
Conjugation	Unconjugated

Note

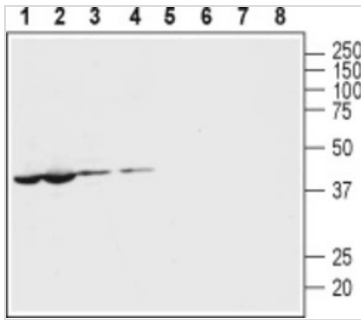
For laboratory research use only. Not for any clinical, therapeutic, or diagnostic use in humans or animals. Not for animal or human consumption.

Purchasers shall not, and agree not to enable third parties to, analyze, copy, reverse engineer or otherwise attempt to determine the structure or sequence of the product.



For full product information, images and publications, please visit our [website](#).

DATA IMAGES



GTx04619 WB Image

WB analysis of various samples using GTx04619 Pannexin 1 antibody prior incubated with (Lane 5-8) or without (Lane 1-4) blocking peptide.

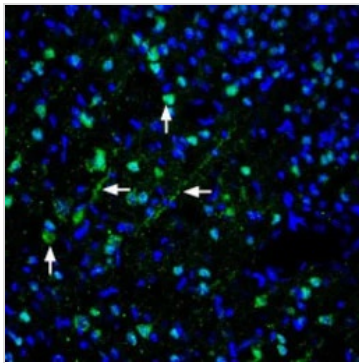
Lane 1 and 5 : Mouse heart tissue lysate

Lane 2 and 6 : Rat heart tissue lysate

Lane 3 and 7 : Mouse brain tissue lysate

Lane 4 and 8 : Rat brain tissue lysate

Dilution : 1:400



GTx04619 IHC (Free Floating) Image

IHC (Free floating) analysis of rat brain tissue using GTx04619 Pannexin 1 antibody. PANX1 staining is apparent in cells with neuronal outline (vertical arrows) and apical dendrites (horizontal arrows) in the parietal cingulate cortex region.

Green : Primary antibody

Blue : DAPI



For full product information, images and publications, please visit our [website](https://www.genetex.com).