

# Human Papillomavirus type 16 E6 antibody

**Cat. No. GTX04630**

<b>Host</b>	Rabbit
<b>Clonality</b>	Polyclonal
<b>Isotype</b>	IgG
<b>Applications</b>	WB, IHC-P, FCM
<b>Reactivity</b>	Human papillomavirus type 16

**Package**  
100 µl

## Applications

### Application Note

\*Optimal dilutions/concentrations should be determined by the researcher.

Suggested dilution	Recommended dilution
WB	Assay dependent
IHC-P	1:200-1:400
FCM	Assay dependent

Not tested in other applications.

## Properties

<b>Form</b>	Liquid
<b>Buffer</b>	10mM TBS, 1% BSA, 50% Glycerol
<b>Preservative</b>	0.03% Proclin300
<b>Storage</b>	Store as concentrated solution. Centrifuge briefly prior to opening vial. For short-term storage (1-2 weeks), store at 4°C. For long-term storage, aliquot and store at -20°C or below. Avoid multiple freeze-thaw cycles.
<b>Concentration</b>	1 mg/ml (Please refer to the vial label for the specific concentration.)
<b>Immunogen</b>	Synthetic peptide from HPV16-E6 conjugated to KLH (aa 85-158)
<b>Purification</b>	Protein A purified
<b>Conjugation</b>	Unconjugated

### Note

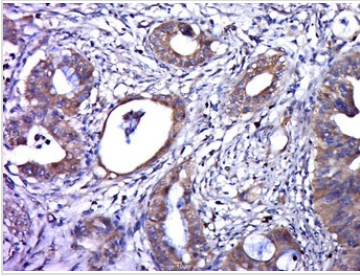
For laboratory research use only. Not for any clinical, therapeutic, or diagnostic use in humans or animals. Not for animal or human consumption.

Purchasers shall not, and agree not to enable third parties to, analyze, copy, reverse engineer or otherwise attempt to determine the structure or sequence of the product.



For full product information, images and publications, please visit our [website](#).

## DATA IMAGES

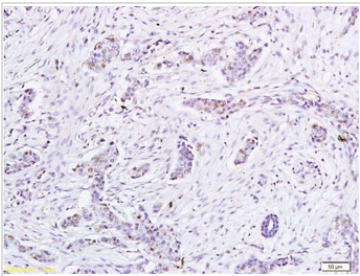


### GTX04630 IHC-P Image

IHC-P analysis of human cervical cancer tissue using GTX04630 Human Papillomavirus type 16 E6 antibody.

Antigen retrieval : Boiled sodium citrate buffer (pH 6.0)

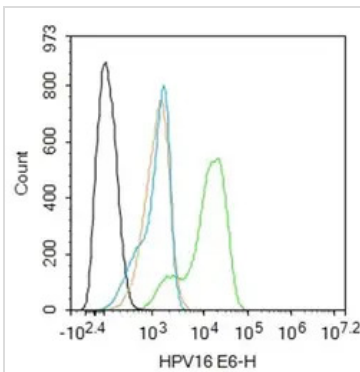
Dilution : 1:400



### GTX04630 IHC-P Image

IHC-P analysis of human cancer tissue using GTX04630 Human Papillomavirus type 16 E6 antibody.

Dilution : 1:200



### GTX04630 FCM Image

FACS analysis of 4% PFA-fixed HeLa cells using GTX04630 Human Papillomavirus type 16 E6 antibody.

Green : Primary antibody

Orange : Isotype control

Light blue : secondary antibody only

Black : cell only

Permeabilization : 90% ice-cold methanol

Dilution : 1:100



For full product information, images and publications, please visit our [website](https://www.genetex.com).