

WISP1 antibody

Cat. No. GTX04633

Host	Rabbit
Clonality	Polyclonal
Isotype	IgG
Applications	WB, IHC-P, IHC-Fr, IHC-P (cell pellet)
Reactivity	Human, Mouse, Rat

Package
100 µg

Applications

Application Note

*Optimal dilutions/concentrations should be determined by the researcher.

Suggested dilution	Recommended dilution
WB	0.1-0.5 µg/mL
IHC-P	0.5-1 µg/mL
IHC-Fr	0.5-1 µg/mL
IHC-P (cell pellet)	Assay dependent

Note : By heat

Not tested in other applications.

Calculated MW 40 kDa. ([Note](#))

Properties

Form	Liquid
Buffer	0.2 mg Na ₂ HPO ₄ , 0.9 mg NaCl, 5 mg BSA
Preservative	0.05 mg Thimerosal, 0.05 mg Sodium azide
Storage	Store as concentrated solution. Centrifuge briefly prior to opening vial. For short-term storage (1-2 weeks), store at 4°C. For long-term storage, aliquot and store at -20°C or below. Avoid multiple freeze-thaw cycles.
Concentration	0.5 mg/ml (Please refer to the vial label for the specific concentration.)
Immunogen	A synthetic peptide corresponding to a sequence at the C-terminus of human WISP1, different from the related mouse and rat sequences by one amino acid.
Purification	Purified by antigen-affinity chromatography
Conjugation	Unconjugated



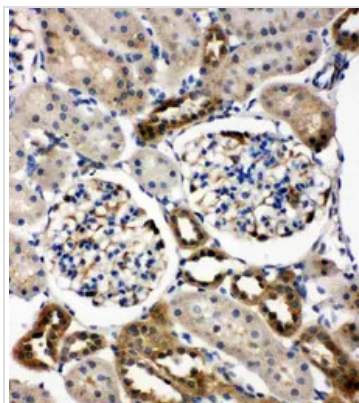
For full product information, images and publications, please visit our [website](#).

For laboratory research use only. Not for any clinical, therapeutic, or diagnostic use in humans or animals. Not for animal or human consumption.

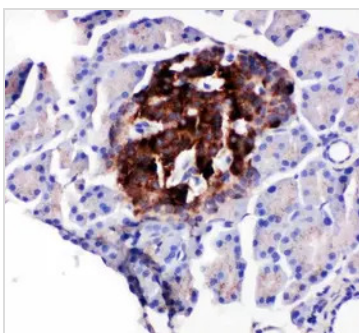
Note

Purchasers shall not, and agree not to enable third parties to, analyze, copy, reverse engineer or otherwise attempt to determine the structure or sequence of the product.

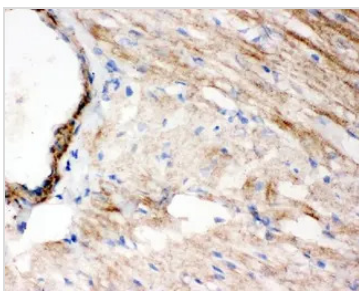
DATA IMAGES

**GTX04633 IHC-P Image**

IHC-P analysis of rat kidney tissue using GTX04633 WISP1 antibody.

**GTX04633 IHC-P Image**

IHC-P analysis of rat pancreas tissue using GTX04633 WISP1 antibody.

**GTX04633 IHC-Fr Image**

IHC-Fr analysis of rat cardiac muscle tissue using GTX04633 WISP1 antibody.

Dilution : 1 µg/mL



For full product information, images and publications, please visit our [website](#).