

## EDA antibody

**Cat. No. GTX04634**

<b>Host</b>	Rabbit
<b>Clonality</b>	Polyclonal
<b>Isotype</b>	IgG
<b>Applications</b>	WB, IHC-P, FCM
<b>Reactivity</b>	Human

**Package**  
400 µl

## Applications

**Application Note**

\*Optimal dilutions/concentrations should be determined by the researcher.

Suggested dilution	Recommended dilution
WB	1:1000
IHC-P	1:10-1:50
FCM	1:10-1:50

Not tested in other applications.

**Calculated MW** 41 kDa. ([Note](#))

## Properties

<b>Form</b>	Liquid
<b>Buffer</b>	PBS
<b>Preservative</b>	0.09% sodium azide
<b>Storage</b>	Store as concentrated solution. Centrifuge briefly prior to opening vial. For short-term storage (1-2 weeks), store at 4°C. For long-term storage, aliquot and store at -20°C or below. Avoid multiple freeze-thaw cycles.
<b>Concentration</b>	Batch dependent (Please refer to the vial label for the specific concentration.)
<b>Immunogen</b>	A KLH conjugated synthetic peptide between 47-76 amino acids from the N-terminal region of human EDA.
<b>Purification</b>	Protein A purified followed by peptide affinity purification
<b>Conjugation</b>	Unconjugated

**Note**

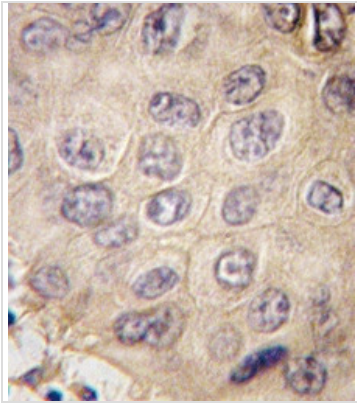
For laboratory research use only. Not for any clinical, therapeutic, or diagnostic use in humans or animals. Not for animal or human consumption.

Purchasers shall not, and agree not to enable third parties to, analyze, copy, reverse engineer or otherwise attempt to determine the structure or sequence of the product.



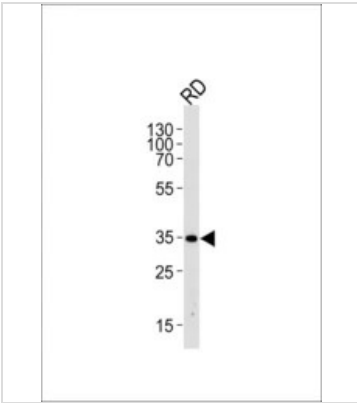
For full product information, images and publications, please visit our [website](#).

DATA IMAGES



**GTX04634 IHC-P Image**

IHC-P analysis of human hepatocarcinoma tissue using GTX04634 EDA antibody.

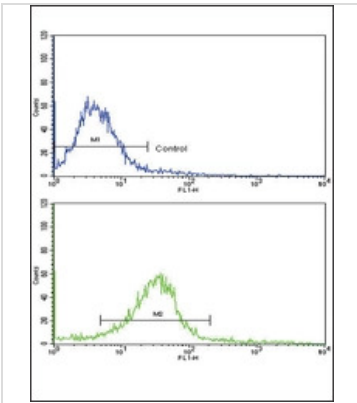


**GTX04634 WB Image**

WB analysis of RD whole cell lysate using GTX04634 EDA antibody.

Loading : 35 µg

Dilution : 1:1000



**GTX04634 FCM Image**

FACS analysis of HeLa cells using GTX04634 EDA antibody.

Green : Primary antibody

Blue : Negative control



For full product information, images and publications, please visit our [website](#).