

SCD antibody

Cat. No. GTX04643

Host	Rabbit
Clonality	Polyclonal
Isotype	IgG
Applications	WB, ICC/IF, IHC-P
Reactivity	Human, Mouse, Rat

Package
100 µl

Applications

Application Note

*Optimal dilutions/concentrations should be determined by the researcher.

Suggested dilution	Recommended dilution
WB	1:500-1:2000
ICC/IF	1:100-1:500
IHC-P	1:50-1:200

Not tested in other applications.

Calculated MW 42 kDa. ([Note](#))

Properties

Form	Liquid
Buffer	PBS, 150mM NaCl, 50% Glycerol
Preservative	0.02% sodium azide
Storage	Store as concentrated solution. Centrifuge briefly prior to opening vial. For short-term storage (1-2 weeks), store at 4°C. For long-term storage, aliquot and store at -20°C or below. Avoid multiple freeze-thaw cycles.
Concentration	1 mg/ml (Please refer to the vial label for the specific concentration.)
Immunogen	A synthesized peptide derived from human SCD(Accession O00767), corresponding to amino acid residues V27-I77.
Purification	Purified by antigen-affinity chromatography From serum
Conjugation	Unconjugated

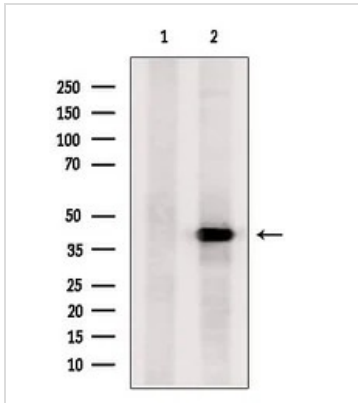
Note

For laboratory research use only. Not for any clinical, therapeutic, or diagnostic use in humans or animals. Not for animal or human consumption.

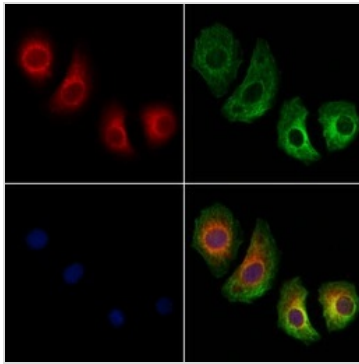
Purchasers shall not, and agree not to enable third parties to, analyze, copy, reverse engineer or otherwise attempt to determine the structure or sequence of the product.



For full product information, images and publications, please visit our [website](#).

DATA IMAGES

GTX04643 WB Image

WB analysis of HeLa whole cell lysate using GTX04643 SCD antibody. The lane on the left was treated with blocking peptide.


GTX04643 ICC/IF Image

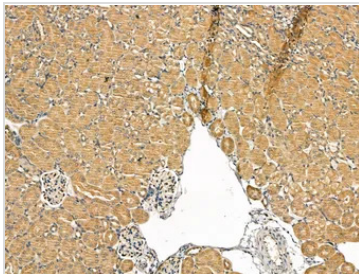
ICC/IF analysis PFA-fixed HeLa cells using GTX04643 SCD antibody.

Red : Primary antibody

Green : Beta tubulin

Blue : DAPI

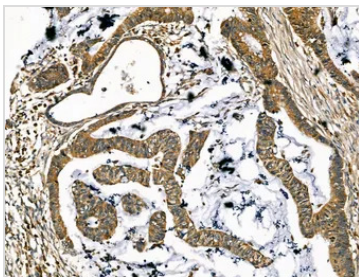
Permeabilization : 0.1% Triton X-100


GTX04643 IHC-P Image

IHC-P analysis of mouse kidney tissue using GTX04643 SCD antibody.

Antigen retrieval : Heat mediated citrate buffer

Dilution : 1:100


GTX04643 IHC-P Image

IHC-P analysis of human colorectal cancer tissue using GTX04643 SCD antibody.

Antigen retrieval : Heat mediated citrate buffer

Dilution : 1:100



For full product information, images and publications, please visit our [website](https://www.genetex.com).