

# JNK antibody

**Cat. No. GTX04658**

<b>Host</b>	Rabbit
<b>Clonality</b>	Polyclonal
<b>Isotype</b>	IgG
<b>Applications</b>	WB, ICC/IF, IHC-P, FCM
<b>Reactivity</b>	Human, Mouse, Rat, Chicken, Pig

**Package**  
100 µl

## Applications

### Application Note

\*Optimal dilutions/concentrations should be determined by the researcher.

Suggested dilution	Recommended dilution
WB	1:300-1:5000
ICC/IF	1:50-1:200
IHC-P	1:200-1:400
FCM	1:20-1:100

Not tested in other applications.

**Calculated MW** 42-47 kDa. ( [Note](#) )

## Properties

<b>Form</b>	Liquid
<b>Buffer</b>	10mM TBS, 1% BSA, 50% Glycerol
<b>Preservative</b>	0.03% Proclin300
<b>Storage</b>	Store as concentrated solution. Centrifuge briefly prior to opening vial. For short-term storage (1-2 weeks), store at 4°C. For long-term storage, aliquot and store at -20°C or below. Avoid multiple freeze-thaw cycles.
<b>Concentration</b>	1 mg/ml (Please refer to the vial label for the specific concentration.)
<b>Immunogen</b>	KLH conjugated synthetic peptide derived from mouse JNK1/2/3(151-250)
<b>Purification</b>	Protein A purified
<b>Conjugation</b>	Unconjugated

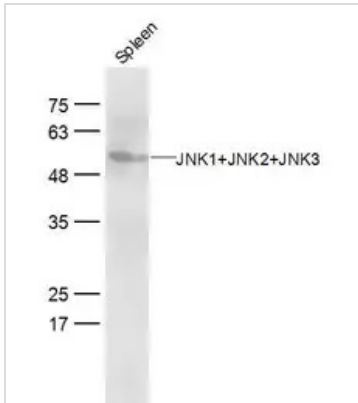
### Note

For laboratory research use only. Not for any clinical, therapeutic, or diagnostic use in humans or animals. Not for animal or human consumption.

Purchasers shall not, and agree not to enable third parties to, analyze, copy, reverse engineer or otherwise attempt to determine the structure or sequence of the product.

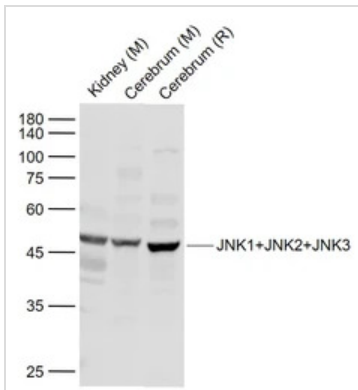


For full product information, images and publications, please visit our [website](#).

**DATA IMAGES**

**GTX04658 WB Image**

WB analysis of mouse spleen tissue lysate using GTX04658 JNK antibody.

Dilution : 1:300


**GTX04658 WB Image**

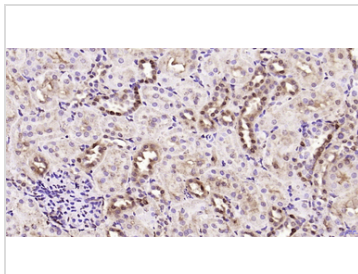
WB analysis of various sample lysates using GTX04658 JNK antibody.

Lane 1 : Mouse kidney tissue lysates

Lane 2 : Mouse cerebrum tissue lysate

Lane 3 : Rat cerebrum tissue lysate

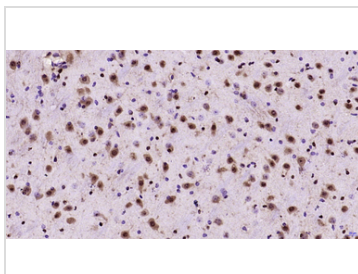
Dilution : 1:1000


**GTX04658 IHC-P Image**

IHC-P analysis of rat kidney tissue using GTX04658 JNK antibody.

Antigen retrieval : Boiled in sodium citrate buffer (pH6.0)

Dilution : 1:200


**GTX04658 IHC-P Image**

IHC-P analysis of mouse brain tissue using GTX04658 JNK antibody.

Antigen retrieval : Boiled in sodium citrate buffer (pH6.0)

Dilution : 1:200



For full product information, images and publications, please visit our [website](https://www.genetex.com).