

JNK antibody [DFI-13]

Cat. No. GTX04659

Host	Rabbit
Clonality	Monoclonal
Isotype	IgG
Applications	WB, ICC/IF, IP
Reactivity	Human, Mouse, Rat, Zebrafish, Bovine, Dog, Monkey

Package

100 µg

Applications

Application Note

*Optimal dilutions/concentrations should be determined by the researcher.

Suggested dilution	Recommended dilution
WB	1:1000-1:2000
ICC/IF	1:50-1:200
IP	1:50

Not tested in other applications.

Calculated MW 42-47 kDa. ([Note](#))

Properties

Form	Liquid
Buffer	PBS, 150mM NaCl, 0.04-0.05% BSA, 50% Glycerol
Preservative	0.02% Sodium azide
Storage	Store as concentrated solution. Centrifuge briefly prior to opening vial. For short-term storage (1-2 weeks), store at 4°C. For long-term storage, aliquot and store at -20°C or below. Avoid multiple freeze-thaw cycles.
Concentration	Batch dependent (Please refer to the vial label for the specific concentration.)
Immunogen	A synthesized peptide derived from human JNK1 + JNK2 + JNK3
Purification	Purified by affinity chromatography
Conjugation	Unconjugated

Note

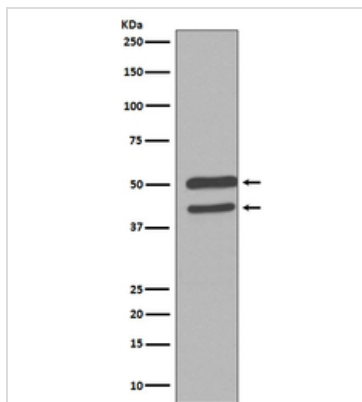
For laboratory research use only. Not for any clinical, therapeutic, or diagnostic use in humans or animals. Not for animal or human consumption.

Purchasers shall not, and agree not to enable third parties to, analyze, copy, reverse engineer or otherwise attempt to determine the structure or sequence of the product.



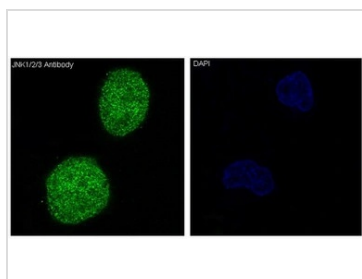
For full product information, images and publications, please visit our [website](#).

DATA IMAGES



GTx04659 WB Image

WB analysis of HeLa whole cell lysate using GTx04659 JNK antibody [DFI-13].



GTx04659 ICC/IF Image

ICC/IF analysis of HeLa cells using GTx04659 JNK antibody [DFI-13].

Green : Primary antibody

Blue : DAPI



For full product information, images and publications, please visit our [website](https://www.genetex.com).