

cGMP antibody [RM467]

Cat. No. GTX04680

Host	Rabbit
Clonality	Monoclonal
Isotype	IgG
Applications	ELISA
Reactivity	Species independent

Package
50 µg

Applications

Application Note

*Optimal dilutions/concentrations should be determined by the researcher.

Suggested dilution	Recommended dilution
ELISA	0.05-0.5 µg/mL

Not tested in other applications.

Product Note

RM467 reacts to cGMP (Cyclic Guanosine Monophosphate). No cross reactivity with other cyclic nucleotide or nucleoside phosphate.

Properties

Form	Liquid
Buffer	PBS, 1% BSA, 50% Glycerol
Preservative	0.09 % sodium azide
Storage	Store as concentrated solution. Centrifuge briefly prior to opening vial. For short-term storage (1-2 weeks), store at 4°C. For long-term storage, aliquot and store at -20°C or below. Avoid multiple freeze-thaw cycles.
Concentration	1 mg/ml (Please refer to the vial label for the specific concentration.)
Immunogen	KLH-conjugated cGMP
Purification	Protein A purified From tissue culture supernatant
Conjugation	Unconjugated

Note

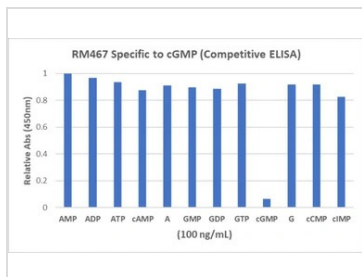
For laboratory research use only. Not for any clinical, therapeutic, or diagnostic use in humans or animals. Not for animal or human consumption.

Purchasers shall not, and agree not to enable third parties to, analyze, copy, reverse engineer or otherwise attempt to determine the structure or sequence of the product.

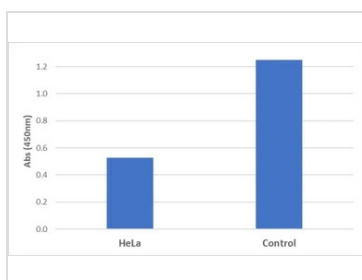


For full product information, images and publications, please visit our [website](#).

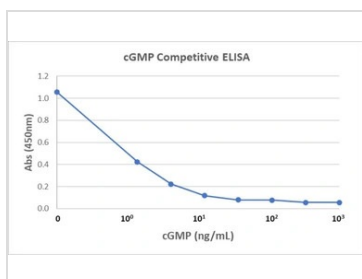
DATA IMAGES

**GTX04680 ELISA Image**

Competitive ELISA showing the specificity of GTX04680 cGMP antibody [RM467]. The 96-well plate was coated with 1 µg/mL of Goat anti-rabbit IgG (50 µl/well). 0.05 µg/ml of GTX04680 cGMP antibody [RM467] (50 µl/well) was added and incubated. After wash and block, cGMP and other cyclic nucleotides or nucleoside phosphates (25 µl/well) were added along with 25 µl/well of 1:5000 diluted HRP conjugated cGMP.

**GTX04680 ELISA Image**

Competitive ELISA detecting cGMP in HeLa cells. The 96-well plate was coated with 1 µg/mL of Goat anti-rabbit IgG (50 µl/well). 0.05 µg/ml of GTX04680 cGMP antibody [RM467] (50 µl/well) was added and incubated. After wash and block, HeLa cell lysate (~10⁵cell/mL) or control (lysate buffer only) (25 µl/well) were added along with 25 µl/well of 1:5000 diluted HRP conjugated cGMP.

**GTX04680 ELISA Image**

Competitive ELISA of cGMP using GTX04680 cGMP antibody [RM467]. The 96-well plate was coated with 1 µg/mL of Goat anti-rabbit IgG (50 µl/well). 0.05 µg/ml of GTX04680 cGMP antibody [RM467] (50 µl/well) was added and incubated. After wash and block, different concentrations of cGMP (25 µl/well) were added along with 25 µl/well of 1:5000 diluted HRP conjugated cGMP.



For full product information, images and publications, please visit our [website](#).