

Dengue virus type 1 Envelope protein

Cat. No. GTX04693-pro

Species Dengue virus 1**Package**
100 µg

Applications

Observed MW (kDa) 55 kDa.

Properties

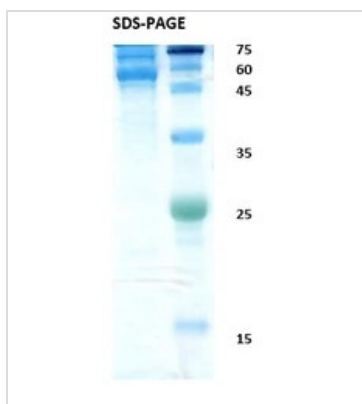
Form Liquid**Buffer** PBS pH 7.3**Preservative** 0.1% ProClin300**Storage** Store as concentrated solution. Centrifuge briefly prior to opening vial. Aliquot and store at -20°C or below. Avoid multiple freeze-thaw cycles.**Concentration** Batch dependent (Please refer to the vial label for the specific concentration.)**Region/Sequence** Full length of Dengue type 1 envelope protein**Expression System** Insect cells**Purity** >90% by SDS-PAGE**Conjugation** Unconjugated

Note

For laboratory research use only. Not for any clinical, therapeutic, or diagnostic use in humans or animals. Not for animal or human consumption.

Purchasers shall not, and agree not to enable third parties to, analyze, copy, reverse engineer or otherwise attempt to determine the structure or sequence of the product.

DATA IMAGES



GTX04693-pro Image

SDS-PAGE analysis of GTX04693-pro Dengue virus type 1 Envelope protein.

For full product information, images and publications, please visit our [website](https://www.genetex.com).