

c-Myc antibody [9E10]

Cat. No. GTX04712

Host	Mouse
Clonality	Monoclonal
Isotype	IgG1
Applications	IHC-P
Reactivity	Human

Package
500 µl

Applications

Application Note

*Optimal dilutions/concentrations should be determined by the researcher.

Suggested dilution	Recommended dilution
IHC-P	1:50-1:200

Note : Recommendations for antigen retrieval : Citrate Buffer pH 6.0

Not tested in other applications.

Properties

Form	Liquid
Buffer	batch dependent
Storage	Store as concentrated solution. Centrifuge briefly prior to opening vial. For short-term storage (1-2 weeks), store at 4°C. For long-term storage, aliquot and store at -20°C or below. Avoid multiple freeze-thaw cycles.
Concentration	Batch dependent (Please refer to the vial label for the specific concentration.)
Immunogen	A synthetic peptide, corresponding to aa 408-439 (AEEQKLISEEDLLRKRREQLKHKLE QLRNSCA) from C-terminus of human c-myc, coupled to KLH 9.
Purification	Unpurified From tissue culture supernatant
Conjugation	Unconjugated

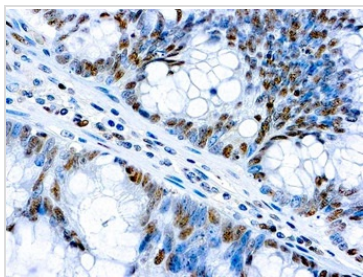
Note

For laboratory research use only. Not for any clinical, therapeutic, or diagnostic use in humans or animals. Not for animal or human consumption.

Purchasers shall not, and agree not to enable third parties to, analyze, copy, reverse engineer or otherwise attempt to determine the structure or sequence of the product.



For full product information, images and publications, please visit our [website](#).

DATA IMAGES

GTx04712 IHC-P Image

IHC-P analysis of human colon adenocarcinoma tissue using GTx04712 c-Myc antibody [9E10].
Antigen retrieval : Citrate Buffer pH 6.0_x000D_



For full product information, images and publications, please visit our [website](#).