

## BCL10 antibody [151]

**Cat. No. GTX04716**

<b>Host</b>	Mouse
<b>Clonality</b>	Monoclonal
<b>Isotype</b>	IgG1
<b>Applications</b>	IHC-P
<b>Reactivity</b>	Human

**Package**  
500 µl

## Applications

**Application Note**

\*Optimal dilutions/concentrations should be determined by the researcher.

Suggested dilution	Recommended dilution
IHC-P	1:50-1:200

**Note : Recommendations for antigen retrieval : EDTA buffer pH 8.0**

Not tested in other applications.

## Properties

<b>Form</b>	Liquid
<b>Buffer</b>	batch dependent
<b>Storage</b>	Store as concentrated solution. Centrifuge briefly prior to opening vial. For short-term storage (1-2 weeks), store at 4°C. For long-term storage, aliquot and store at -20°C or below. Avoid multiple freeze-thaw cycles.
<b>Concentration</b>	Batch dependent (Please refer to the vial label for the specific concentration.)
<b>Immunogen</b>	Human recombinant Bcl-10
<b>Purification</b>	Protien G purified
<b>Conjugation</b>	Unconjugated

**Note**

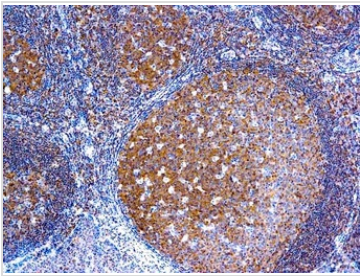
For laboratory research use only. Not for any clinical, therapeutic, or diagnostic use in humans or animals. Not for animal or human consumption.

Purchasers shall not, and agree not to enable third parties to, analyze, copy, reverse engineer or otherwise attempt to determine the structure or sequence of the product.



For full product information, images and publications, please visit our [website](#).

## DATA IMAGES

**GTX04716 IHC-P Image**

IHC-P analysis of human tonsil tissue using GTX04716 BCL10 antibody [151].  
Antigen retrieval : EDTA Buffer pH 8.0



For full product information, images and publications, please visit our [website](#).