

Rabbit Anti-Human IgG (Fc) antibody (AP)

Cat. No. GTX04810

Host	Rabbit
Clonality	Polyclonal
Isotype	IgG
Applications	WB, Dot, ELISA, IHC
Reactivity	Human

Package
500 µg

Applications

Application Note

*Optimal dilutions/concentrations should be determined by the researcher.

Suggested dilution	Recommended dilution
WB	1:500-1:2500
Dot	Assay dependent
ELISA	1:2000-1:10000
IHC	1:200-1:1000

Not tested in other applications.

Properties

Form	Liquid
Buffer	50mM Tris-HCl, 150mM NaCl, 1mM MgCl ₂ , 0.1mM ZnCl ₂ , 50% Glycerol, 1%BSA
Preservative	0.05% Sodium Azide
Storage	Store as concentrated solution. Centrifuge briefly prior to opening vial. Store at 4°C. DO NOT FREEZE.
Concentration	1 mg/ml (Please refer to the vial label for the specific concentration.)
Immunogen	Human IgG F(c) fragment
Purification	Purified by chromatography followed by solid phase adsorptions From serum
Conjugation	Alkaline Phosphatase (AP)

Note

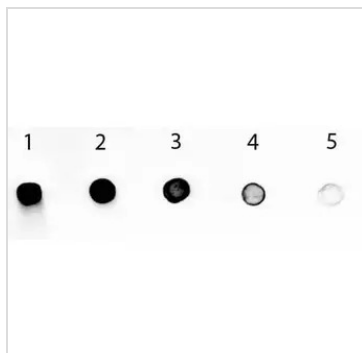
For laboratory research use only. Not for any clinical, therapeutic, or diagnostic use in humans or animals. Not for animal or human consumption.

Purchasers shall not, and agree not to enable third parties to, analyze, copy, reverse engineer or otherwise attempt to determine the structure or sequence of the product.



For full product information, images and publications, please visit our [website](#).

DATA IMAGES



GTx04810 Dot Image

Dot blot analysis of serial diluted Human IgG Fc protein using GTx04810 Rabbit Anti-Human IgG (Fc) antibody (AP).

Lane 1 : 100ng

Lane 2 : 33.33ng

Lane 3 : 11.11ng

Lane 4 : 3.70ng

Lane 5 : 1.23ng

Dilution : 1:1000



For full product information, images and publications, please visit our [website](https://www.genetex.com).