

NDP52 antibody [9E2F2]

Cat. No. GTX04863

Host	Mouse
Clonality	Monoclonal
Isotype	IgG2b
Applications	WB, ICC/IF, FCM
Reactivity	Human, Mouse, Rat

Package
100 µg

Applications

Application Note

*Optimal dilutions/concentrations should be determined by the researcher.

Suggested dilution	Recommended dilution
WB	0.25-0.5 µg/ml
ICC/IF	5 µg/ml
FCM	1-3µg/1x10 ⁶ cells

Not tested in other applications.

Calculated MW 52 kDa. ([Note](#))

Properties

Form	Liquid
Buffer	4 mg Trehalose, 0.9 mg NaCl, 0.2 mg Na ₂ HPO ₄
Preservative	No preservatives
Storage	Store as concentrated solution. Centrifuge briefly prior to opening vial. For short-term storage (1-2 weeks), store at 4°C. For long-term storage, aliquot and store at -20°C or below. Avoid multiple freeze-thaw cycles.
Concentration	0.5 mg/ml (Please refer to the vial label for the specific concentration.)
Immunogen	E.coli-derived human NDP52/CALCOCO2 recombinant protein (Position: M1-L446).
Purification	Purified by antigen-affinity chromatography
Conjugation	Unconjugated

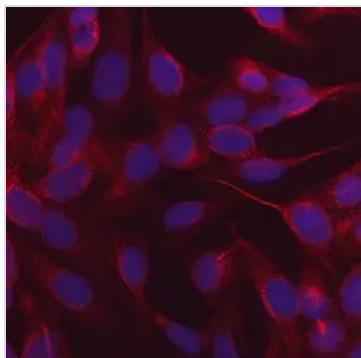
Note

For laboratory research use only. Not for any clinical, therapeutic, or diagnostic use in humans or animals. Not for animal or human consumption.

Purchasers shall not, and agree not to enable third parties to, analyze, copy, reverse engineer or otherwise attempt to determine the structure or sequence of the product.



For full product information, images and publications, please visit our [website](#).

DATA IMAGES

GTX04863 ICC/IF Image

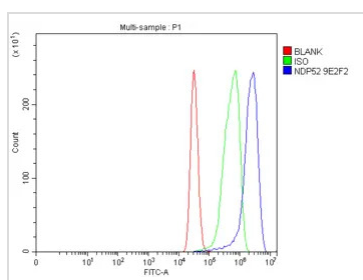
ICC/IF analysis of PFA-fixed U2OS cells using GTX04863 NDP52 antibody [9E2F2].

Orange : Primary antibody

Blue : DAPI

Antigen retrieval : IHC enzyme antigen retrieval reagent for 15 mins

Dilution : 5 µg/mL


GTX04863 FCM Image

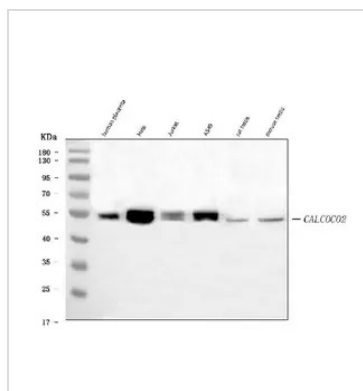
FACS analysis of MCF7 cells using GTX04863 NDP52 antibody [9E2F2].

Blue line : Primary antibody

Green line : Isotype control

Red line : Unlabelled sample

Dilution : 1µg/1x10⁶ cells


GTX04863 WB Image

WB analysis of various samples using GTX04863 NDP52 antibody [9E2F2].

Lane 1: Human placenta tissue lysate

Lane 2 : HeLa whole cell lysate

Lane 3 : Jurkat whole cell lysate

Lane 4 : A549 whole cell lysate

Lane 5 : Rat testis tissue lysate

Lane 6 : Mouse testis tissue lysate

Loading : 30µg

Dilution : 0.5 µg/mL



For full product information, images and publications, please visit our [website](https://www.genetex.com).