

TIM-3 antibody

Cat. No. GTX04871

Host	Rabbit
Clonality	Polyclonal
Isotype	IgG
Applications	WB
Reactivity	Human

Package
400 µl

Applications

Application Note

*Optimal dilutions/concentrations should be determined by the researcher.

Suggested dilution	Recommended dilution
WB	1:1000

Not tested in other applications.

Calculated MW 33 kDa. ([Note](#))

Properties

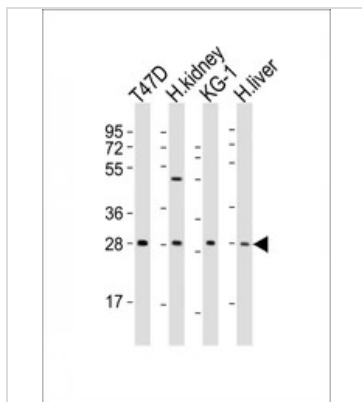
Form	Liquid
Buffer	PBS
Preservative	0.09% Sodium Azide
Storage	Store as concentrated solution. Centrifuge briefly prior to opening vial. For short-term storage (1-2 weeks), store at 4°C. For long-term storage, aliquot and store at -20°C or below. Avoid multiple freeze-thaw cycles.
Concentration	Batch dependent (Please refer to the vial label for the specific concentration.)
Immunogen	KLH conjugated synthetic peptide between 167-194 amino acids from the Central region of human HAVCR2.
Purification	Purified by Protein A followed by antigen-affinity chromatography
Conjugation	Unconjugated

Note For laboratory research use only. Not for any clinical, therapeutic, or diagnostic use in humans or animals. Not for animal or human consumption.

Purchasers shall not, and agree not to enable third parties to, analyze, copy, reverse engineer or otherwise attempt to determine the structure or sequence of the product.



For full product information, images and publications, please visit our [website](#).

DATA IMAGES

GTX04871 WB Image

WB analysis of various samples using GTX04871 TIM-3 antibody.

Lane 1 : T47D whole cell lysate

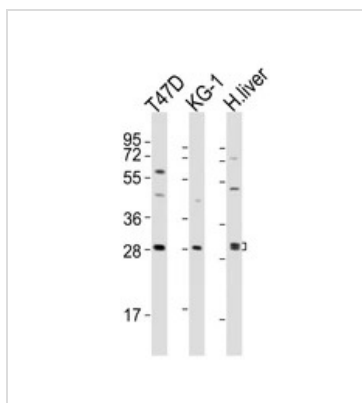
Lane 2 : human kidney tissue lysate

Lane 3 : KG-1 whole cell lysate

Lane 4 : human liver tissue lysate

Loading : 20 μ g

Dilution : 1:2000


GTX04871 WB Image

WB analysis of various samples using GTX04871 TIM-3 antibody.

Lane 1 : T47D whole cell lysate

Lane 2 : KG-1 whole cell lysate

Lane 3 : human liver tissue lysate

Loading : 20 μ g

Dilution : 1:2000



For full product information, images and publications, please visit our [website](#).