

beta-Gal antibody [OTI5H2]

Cat. No. GTX04880

Host	Mouse
Clonality	Monoclonal
Isotype	IgG1
Applications	WB, ICC/IF, FCM
Reactivity	Human, Mouse, Dog, Monkey

Package
100 µl

Applications

Application Note

*Optimal dilutions/concentrations should be determined by the researcher.

Suggested dilution	Recommended dilution
WB	1:1000
ICC/IF	1:100
FCM	1:100

Not tested in other applications.

Calculated MW 76 kDa. ([Note](#))

Properties

Form	Liquid
Buffer	PBS, 1% BSA, 50% Glycerol
Preservative	0.02% Sodium Azide
Storage	Store as concentrated solution. Centrifuge briefly prior to opening vial. For short-term storage (1-2 weeks), store at 4°C. For long-term storage, aliquot and store at -20°C or below. Avoid multiple freeze-thaw cycles.
Concentration	1 mg/ml (Please refer to the vial label for the specific concentration.)
Immunogen	Full length human recombinant protein of human GLB1(NP_001073279) produced in HEK293T cell.
Purification	Purified by affinity chromatography
Conjugation	Unconjugated

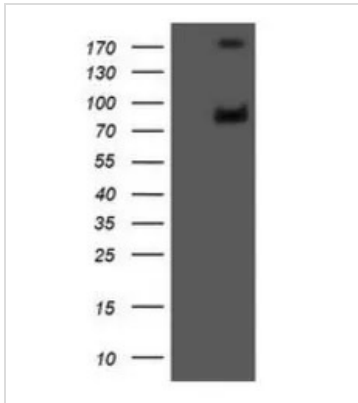
Note

For laboratory research use only. Not for any clinical, therapeutic, or diagnostic use in humans or animals. Not for animal or human consumption.

Purchasers shall not, and agree not to enable third parties to, analyze, copy, reverse engineer or otherwise attempt to determine the structure or sequence of the product.

For full product information, images and publications, please visit our [website](#).

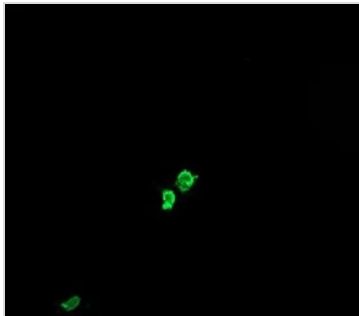
DATA IMAGES



GTX04880 WB Image

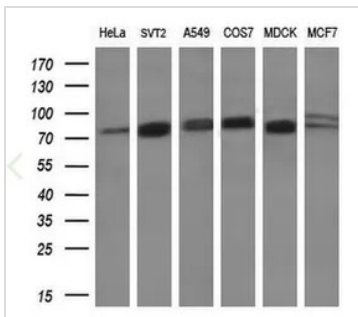
WB analysis of HEK293T cells with/without human GLB1 transfection using GTX04880 beta-Gal antibody [OTI5H2].

Loading : 5 µg



GTX04880 WB Image

ICC/IF analysis of COS7 cells with human GLB1 transfection using GTX04880 beta-Gal antibody [OTI5H2].

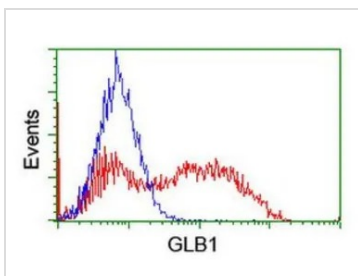


GTX04880 WB Image

WB analysis of various samples using GTX04880 beta-Gal antibody [OTI5H2].

Loading : 10 µg

Dilution : 1:200



GTX04880 ICC/IF Image

FACS analysis of HEK293T cells with/without human GLB1 transfection using GTX04880 beta-Gal antibody [OTI5H2].

Red : HEK293T cells with human GLB1 transfection

Blue line : HEK293T cells without human GLB1 transfection



For full product information, images and publications, please visit our [website](https://www.genetex.com).