

PARP11 antibody

Cat. No. GTX04915

Host	Rabbit
Clonality	Polyclonal
Applications	WB
Reactivity	Human

Package
100 µl

Applications

Application Note

*Optimal dilutions/concentrations should be determined by the researcher.

Suggested dilution	Recommended dilution
WB	0.2-1 µg/ml
Not tested in other applications.	
Calculated MW	39 kDa. (Note)

Properties

Form	Liquid
Buffer	PBS, 2% Sucrose
Preservative	0.09% Sodium Azide
Storage	Store as concentrated solution. Centrifuge briefly prior to opening vial. For short-term storage (1-2 weeks), store at 4°C. For long-term storage, aliquot and store at -20°C or below. Avoid multiple freeze-thaw cycles.
Concentration	0.5 mg/ml (Please refer to the vial label for the specific concentration.)
Immunogen	A synthetic peptide directed towards the middle region of human PARP11 : IKHGNTFQIHGVSLQQRHLFRTYKSMFLARVLIGDYINGDSKYMRRPPSKD
Purification	Purified by affinity chromatography
Conjugation	Unconjugated

Note

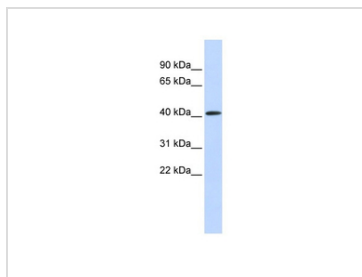
For laboratory research use only. Not for any clinical, therapeutic, or diagnostic use in humans or animals. Not for animal or human consumption.

Purchasers shall not, and agree not to enable third parties to, analyze, copy, reverse engineer or otherwise attempt to determine the structure or sequence of the product.



For full product information, images and publications, please visit our [website](#).

DATA IMAGES



GTX04915 WB Image

WB analysis of human muscle tissue lysate using GTX04915 PARP11 antibody.



For full product information, images and publications, please visit our [website](https://www.genetex.com).