

KLF7 antibody

Cat. No. GTX04926

Host	Rabbit
Clonality	Polyclonal
Isotype	IgG
Applications	WB, IHC-P
Reactivity	Human, Mouse

Package
100 µl

Applications

Application Note

*Optimal dilutions/concentrations should be determined by the researcher.

Suggested dilution	Recommended dilution
WB	1:500-1:2000
IHC-P	1:50-1:200

Not tested in other applications.

Calculated MW 33 kDa. ([Note](#))

Properties

Form	Liquid
Buffer	PBS, 40% Glycerol
Preservative	0.05% Sodium Azide
Storage	Store as concentrated solution. Centrifuge briefly prior to opening vial. For short-term storage (1-2 weeks), store at 4°C. For long-term storage, aliquot and store at -20°C or below. Avoid multiple freeze-thaw cycles.
Concentration	2.9 mg/ml (Please refer to the vial label for the specific concentration.)
Immunogen	Full length fusion protein
Purification	Purified by antigen-affinity chromatography
Conjugation	Unconjugated

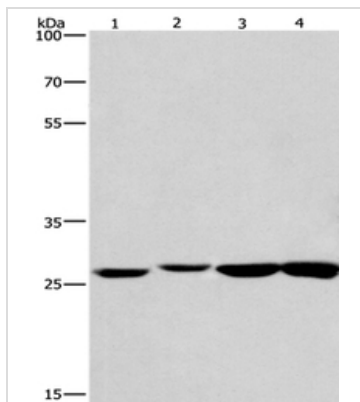
Note

For laboratory research use only. Not for any clinical, therapeutic, or diagnostic use in humans or animals. Not for animal or human consumption.

Purchasers shall not, and agree not to enable third parties to, analyze, copy, reverse engineer or otherwise attempt to determine the structure or sequence of the product.



For full product information, images and publications, please visit our [website](#).

DATA IMAGES

GTx04926 WB Image

WB analysis of various samples using GTx04926 KLF7 antibody.

Lane 1 : human colon cancer tissue lysate

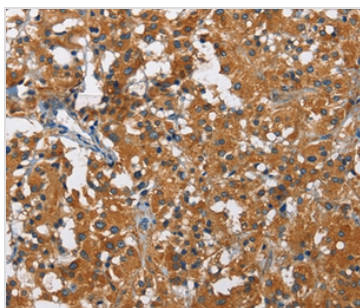
Lane 2 : mouse kidney tissue lysate

Lane 3 : mouse testis tissue lysate

Lane 4 : human fetal brain tissue lysate

Loading : 40µg

Dilution : 1.4 µg/ml


GTx04926 IHC-P Image

IHC-P analysis of human thyroid cancer tissue using GTx04926 KLF7 antibody.

Dilution : 1:60



For full product information, images and publications, please visit our [website](https://www.genetex.com).