

## Bestrophin 1 antibody

Cat. No. GTX04928

|                     |                                 |
|---------------------|---------------------------------|
| <b>Host</b>         | Rabbit                          |
| <b>Clonality</b>    | Polyclonal                      |
| <b>Isotype</b>      | IgG                             |
| <b>Applications</b> | WB, ICC/IF, IHC-P, FCM, IP, LCI |
| <b>Reactivity</b>   | Human, Mouse, Rat               |

Package  
50 µl

## Applications

## Application Note

\*Optimal dilutions/concentrations should be determined by the researcher.

| Suggested dilution | Recommended dilution |
|--------------------|----------------------|
| WB                 | Assay dependent      |
| ICC/IF             | Assay dependent      |
| IHC-P              | Assay dependent      |
| FCM                | Assay dependent      |
| IP                 | Assay dependent      |
| LCI                | Assay dependent      |

Not tested in other applications.

**Calculated MW** 64 kDa. ( [Note](#) )

**Product Note** This antibody was raised against mouse BEST1 Extracellular domain.

## Properties

|                      |  |
|----------------------|--|
| <b>Form</b>          | Liquid   |
| <b>Buffer</b>        | PBS, 1% BSA  |
| <b>Preservative</b>  | 0.05% Sodium Azide   |
| <b>Storage</b>       | Store as concentrated solution. Centrifuge briefly prior to opening vial. For short-term storage (1-2 weeks), store at 4°C. For long-term storage, aliquot and store at -20°C or below. Avoid multiple freeze-thaw cycles. |
| <b>Concentration</b> | 0.8 mg/ml (Please refer to the vial label for the specific concentration.)   |
| <b>Immunogen</b>     | Peptide (C)NPNKDYPGHEMD, corresponding to amino acid residues 259-270 of mouse Bestrophin-1 (Accession O88870) of 3rd extracellular loop   |
| <b>Purification</b>  | Purified by antigen-affinity chromatography  |



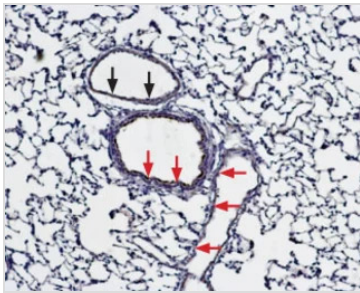
For full product information, images and publications, please visit our [website](#).

**Conjugation** Unconjugated

For laboratory research use only. Not for any clinical, therapeutic, or diagnostic use in humans or animals. Not for animal or human consumption.

**Note** Purchasers shall not, and agree not to enable third parties to, analyze, copy, reverse engineer or otherwise attempt to determine the structure or sequence of the product.

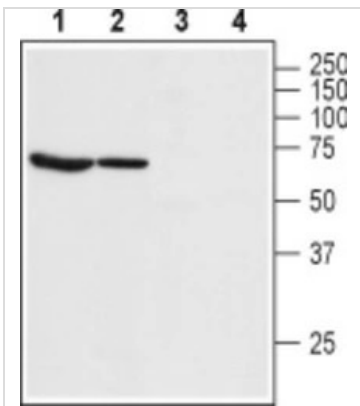
DATA IMAGES



**GTX04928 IHC-P Image**

IHC-P analysis of rat lung tissue using GTX04928 Bestrophin 1 antibody. BEST1 is expressed both in the respiratory epithelium (red arrows) and in vascular smooth muscle (black arrows).

Dilution : 1:100



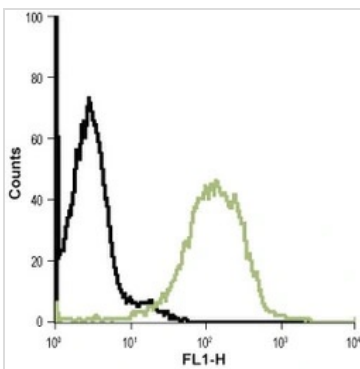
**GTX04928 WB Image**

WB analysis of various samples using GTX04928 Bestrophin 1 antibody prior incubated with (Lane 3-4) or without (Lane 1-2) blocking peptide.

Lane 1 and Lane 3: rat lung tissue lysate

Lane 2 and lane 4 : rat eye tissue lysate

Dilution : 1:200



**GTX04928 FCM Image**

FACS analysis of live intact Jurkat cells using GTX04928 Bestrophin 1 antibody.

Green line : Primary antibody

Black line : Control

Dilution : 1:20



For full product information, images and publications, please visit our [website](#).