

# PATZ1 antibody

**Cat. No. GTX04950**

<b>Host</b>	Rabbit
<b>Clonality</b>	Polyclonal
<b>Isotype</b>	IgG
<b>Applications</b>	WB, ICC/IF, FCM, ELISA
<b>Reactivity</b>	Human

**Package**  
100 µg

## Applications

### Application Note

\*Optimal dilutions/concentrations should be determined by the researcher.

Suggested dilution	Recommended dilution
WB	0.25-0.5 µg/ml
ICC/IF	5 µg/ml
FCM	1-3 µg/1x10 <sup>6</sup> cells
ELISA	0.1-0.5 µg/ml

**Note : Permeabilization is required for this application.**

Not tested in other applications.

**Calculated MW** 74 kDa. ( [Note](#) )

## Properties

<b>Form</b>	Liquid
<b>Buffer</b>	4 mg Trehalose, 0.9 mg NaCl, 0.2 mg Na <sub>2</sub> HPO <sub>4</sub>
<b>Preservative</b>	No preservatives
<b>Storage</b>	Store as concentrated solution. Centrifuge briefly prior to opening vial. For short-term storage (1-2 weeks), store at 4°C. For long-term storage, aliquot and store at -20°C or below. Avoid multiple freeze-thaw cycles.
<b>Concentration</b>	0.5 mg/ml (Please refer to the vial label for the specific concentration.)
<b>Immunogen</b>	E.coli-derived human PATZ1 recombinant protein (Position: M145-Q680).
<b>Purification</b>	Purified by antigen-affinity chromatography
<b>Conjugation</b>	Unconjugated

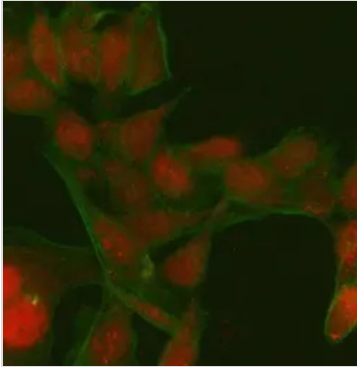


For full product information, images and publications, please visit our [website](#).

For laboratory research use only. Not for any clinical, therapeutic, or diagnostic use in humans or animals. Not for animal or human consumption.

**Note**

Purchasers shall not, and agree not to enable third parties to, analyze, copy, reverse engineer or otherwise attempt to determine the structure or sequence of the product.

**DATA IMAGES**

**GTX04950 ICC/IF Image**

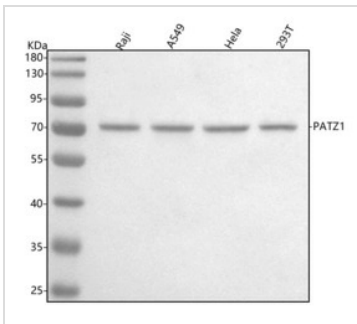
ICC/IF analysis of PFA-fixed HeLa cells using GTX04950 PATZ1 antibody.

Red : Primary antibody

Green : Beta tubulin

Antigen retrieval : IHC enzyme antigen retrieval reagent

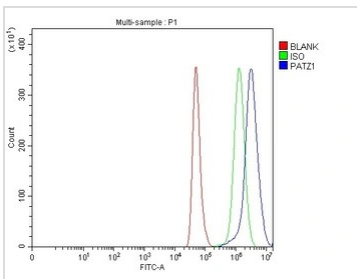
Dilution : 5 µg/mL


**GTX04950 WB Image**

WB analysis of various samples using GTX04950 PATZ1 antibody.

Loading : 30µg

Dilution : 0.5 µg/mL


**GTX04950 FCM Image**

FACS analysis of 4% PFA-fixed HeLa cells using GTX04950 PATZ1 antibody.

Blue line : Primary antibody

Green line : Isotype control

Red line : Unlabelled sample

Dilution : 1 µg/1x10<sup>6</sup> cells

Permeabilization: PBS with saponin and triton



For full product information, images and publications, please visit our [website](https://www.genetex.com).