

GATSL3 antibody

Cat. No. GTX04957

Host	Rabbit
Clonality	Polyclonal
Isotype	IgG
Applications	WB
Reactivity	Human

Package
100 µl

Applications

Application Note

*Optimal dilutions/concentrations should be determined by the researcher.

Suggested dilution	Recommended dilution
WB	Assay dependent
Not tested in other applications.	

Calculated MW 36 kDa. ([Note](#))

Properties

Form	Liquid
Buffer	PBS, 2% sucrose
Preservative	0.09% Sodium Azide
Storage	Store as concentrated solution. Centrifuge briefly prior to opening vial. For short-term storage (1-2 weeks), store at 4°C. For long-term storage, aliquot and store at -20°C or below. Avoid multiple freeze-thaw cycles.
Concentration	0.5 mg/ml (Please refer to the vial label for the specific concentration.)
Immunogen	A synthetic peptide directed towards the C-terminal region of Human GATSL3 protein: EPSSITFFAFSLIEGYISIVMDAETQKKFPSDLLLTSSSGELWRMVRIGG
Purification	Purified by affinity chromatography
Conjugation	Unconjugated

Note

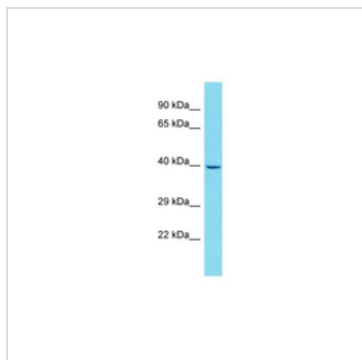
For laboratory research use only. Not for any clinical, therapeutic, or diagnostic use in humans or animals. Not for animal or human consumption.

Purchasers shall not, and agree not to enable third parties to, analyze, copy, reverse engineer or otherwise attempt to determine the structure or sequence of the product.



For full product information, images and publications, please visit our [website](#).

DATA IMAGES



GTx04957 WB Image

WB analysis of HepG2 whole cell lysate using GTx04957 GATSL3 antibody.

Dilution : 1 µg/mL



For full product information, images and publications, please visit our [website](#).