

## GATSL3 antibody

**Cat. No. GTX04958**

<b>Host</b>	Rabbit
<b>Clonality</b>	Polyclonal
<b>Isotype</b>	IgG
<b>Applications</b>	WB, ICC/IF, IHC-P
<b>Reactivity</b>	Human, Mouse, Rat

**Package**  
100 µl

## Applications

**Application Note**

\*Optimal dilutions/concentrations should be determined by the researcher.

Suggested dilution	Recommended dilution
WB	1:500-1:1000
ICC/IF	1:50-1:500
IHC-P	1:50-1:200

Not tested in other applications.

**Calculated MW** 36 kDa. ([Note](#))

## Properties

<b>Form</b>	Liquid
<b>Buffer</b>	PBS, 50% Glycerol
<b>Preservative</b>	0.05% proclin300
<b>Storage</b>	Store as concentrated solution. Centrifuge briefly prior to opening vial. For short-term storage (1-2 weeks), store at 4°C. For long-term storage, aliquot and store at -20°C or below. Avoid multiple freeze-thaw cycles.
<b>Concentration</b>	Batch dependent (Please refer to the vial label for the specific concentration.)
<b>Immunogen</b>	Recombinant fusion protein containing a sequence corresponding to amino acids 1-329 of human CASTOR1 (NP_001032755.1).
<b>Purification</b>	Purified by affinity chromatography
<b>Conjugation</b>	Unconjugated

**Note**

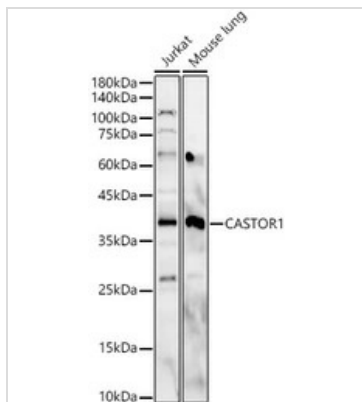
For laboratory research use only. Not for any clinical, therapeutic, or diagnostic use in humans or animals. Not for animal or human consumption.

Purchasers shall not, and agree not to enable third parties to, analyze, copy, reverse engineer or otherwise attempt to determine the structure or sequence of the product.



For full product information, images and publications, please visit our [website](#).

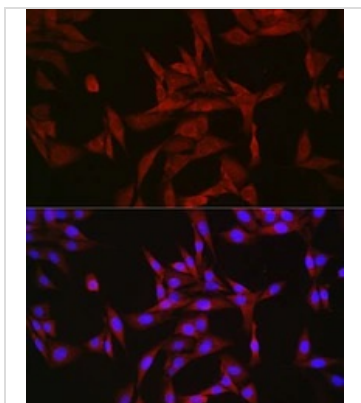
## DATA IMAGES

**GTX04958 WB Image**

WB analysis of various samples using GTX04958 GATSL3 antibody.

Loading : 25 $\mu$ g

Dilution :1:1000

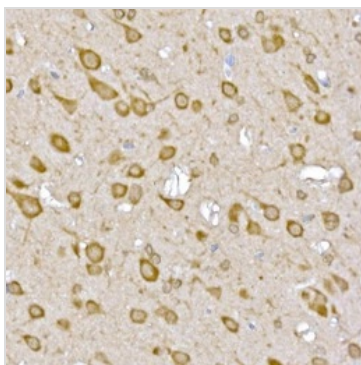
**GTX04958 ICC/IF Image**

ICC/IF analysis of NIH/3T3 cells using GTX04958 GATSL3 antibody.

Orange : Primary antibody

Blue : DAPI

Dilution : 1:50

**GTX04958 IHC-P Image**

IHC-P analysis of rat brain tissue using GTX04958 GATSL3 antibody.

Antigen retrieval : High pressure antigen retrieval with 10 mM citrate buffer pH 6.0

Dilution : 1:50



For full product information, images and publications, please visit our [website](#).