

PIT1 antibody [PIT1/7262]

Cat. No. GTX05006

Host	Mouse
Clonality	Monoclonal
Isotype	IgG2b
Applications	IHC-P
Reactivity	Human

Package
100 µg

Applications

Application Note

*Optimal dilutions/concentrations should be determined by the researcher.

Suggested dilution	Recommended dilution
IHC-P	1-2µg/ml

Note : Antigen retrieval : heat mediated tissue sections in 10mM Tris with 1mM EDTA (pH 9.0) followed by cooling at RT for 20 minutes.

Not tested in other applications.

Properties

Form	Liquid
Buffer	PBS, 0.05% BSA (Please contact us for PBS only format)
Preservative	0.05% Sodium Azide
Storage	Store as concentrated solution. Centrifuge briefly prior to opening vial. Store at 4°C.
Concentration	0.2 mg/ml (Please refer to the vial label for the specific concentration.)
Immunogen	Recombinant human full-length POU1F1 protein
Purification	Purified by Protein A/G
Conjugation	Unconjugated

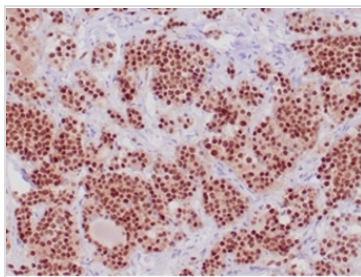
Note

For laboratory research use only. Not for any clinical, therapeutic, or diagnostic use in humans or animals. Not for animal or human consumption.

Purchasers shall not, and agree not to enable third parties to, analyze, copy, reverse engineer or otherwise attempt to determine the structure or sequence of the product.



For full product information, images and publications, please visit our [website](#).

DATA IMAGES

GTX05006 IHC-P Image

IHC-P analysis of human pituitary tissue using GTX05006 PIT1 antibody [PIT1/7262].
Antigen retrieval : Heat mediated antigen retrieval in Tris/EDTA buffer (pH 9.0).



For full product information, images and publications, please visit our [website](#).