

KGF antibody

Cat. No. GTX05025

Host	Rabbit
Clonality	Polyclonal
Isotype	IgG
Applications	WB, IHC-P
Reactivity	Human

Package
100 µl

Applications

Application Note

*Optimal dilutions/concentrations should be determined by the researcher.

Suggested dilution	Recommended dilution
WB	1:1000-1:3000
IHC-P	1:50-1:200

Not tested in other applications.

Calculated MW 23 kDa. ([Note](#))

Properties

Form	Liquid
Buffer	PBS, 40% Glycerol
Preservative	0.05% Sodium Azide
Storage	Store as concentrated solution. Centrifuge briefly prior to opening vial. For short-term storage (1-2 weeks), store at 4°C. For long-term storage, aliquot and store at -20°C or below. Avoid multiple freeze-thaw cycles.
Concentration	0.4 mg/ml (Please refer to the vial label for the specific concentration.)
Immunogen	Synthetic peptide corresponding to a region derived from Human Fibroblast growth factor 7 (179-182 aa).
Purification	Purified by antigen-affinity chromatography
Conjugation	Unconjugated

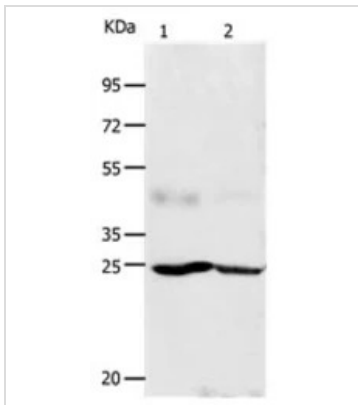
Note

For laboratory research use only. Not for any clinical, therapeutic, or diagnostic use in humans or animals. Not for animal or human consumption.

Purchasers shall not, and agree not to enable third parties to, analyze, copy, reverse engineer or otherwise attempt to determine the structure or sequence of the product.



For full product information, images and publications, please visit our [website](#).

DATA IMAGES

GTX05025 WB Image

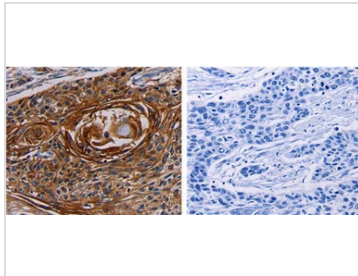
WB analysis of various samples using GTX05025 KGF antibody.

Lane 1 : Human gastric cancer tissue lysate

Lane 2 : Human esophagus cancer tissue lysate

Dilution : 1:1250

Loading : 40µg


GTX05025 IHC-P Image

IHC-P analysis of human esophagus cancer tissue using GTX05025 KGF antibody. The picture on the right was treated with blocking peptide.

Dilution : 1:15



For full product information, images and publications, please visit our [website](#).