

## IKB alpha (phospho Ser32/Ser36) antibody

**Cat. No. GTX05029**

|                     |                          |
|---------------------|--------------------------|
| <b>Host</b>         | Rabbit                   |
| <b>Clonality</b>    | Polyclonal               |
| <b>Isotype</b>      | IgG                      |
| <b>Applications</b> | WB, ICC/IF, IHC-P, ELISA |
| <b>Reactivity</b>   | Human, Mouse, Rat        |

**Package**  
100 µl

## Applications

**Application Note**

\*Optimal dilutions/concentrations should be determined by the researcher.

| Suggested dilution | Recommended dilution |
|--------------------|----------------------|
| WB                 | 1:500-1:2000         |
| ICC/IF             | 1:100-1:500          |
| IHC-P              | 1:50-1:500           |
| ELISA              | Assay dependent      |

Not tested in other applications.

**Calculated MW** 36 kDa. ([Note](#))

## Properties

|                      |  |
|----------------------|--|
| <b>Form</b>          | Liquid   |
| <b>Buffer</b>        | PBS, 150mM NaCl, 50%Glycerol   |
| <b>Preservative</b>  | 0.02% Sodium Azide   |
| <b>Storage</b>       | Store as concentrated solution. Centrifuge briefly prior to opening vial. For short-term storage (1-2 weeks), store at 4°C. For long-term storage, aliquot and store at -20°C or below. Avoid multiple freeze-thaw cycles. |
| <b>Concentration</b> | 1 mg/ml (Please refer to the vial label for the specific concentration.)   |
| <b>Immunogen</b>     | A synthesized peptide derived from human NFKBIA(Accession P25963), corresponding to amino acid residues around phosphorylated Ser32.   |
| <b>Purification</b>  | Purified by affinity chromatography via sequential chromatography on phospho-peptide and non-phospho-peptide affinity columns<br>From serum  |
| <b>Conjugation</b>   | Unconjugated   |



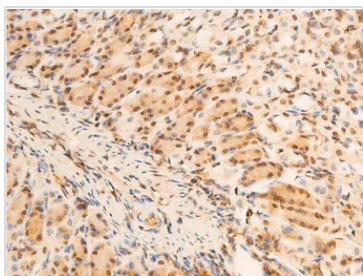
For full product information, images and publications, please visit our [website](#).

For laboratory research use only. Not for any clinical, therapeutic, or diagnostic use in humans or animals. Not for animal or human consumption.

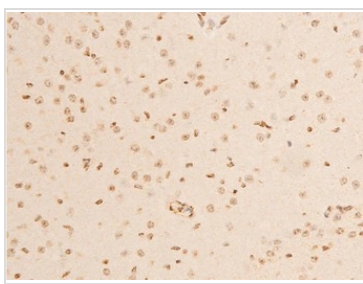
**Note**

Purchasers shall not, and agree not to enable third parties to, analyze, copy, reverse engineer or otherwise attempt to determine the structure or sequence of the product.

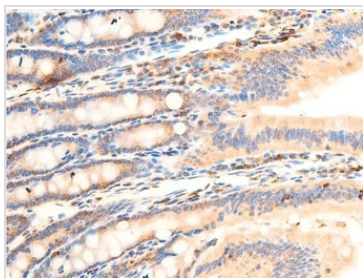
## DATA IMAGES

**GTX05029 IHC-P Image**

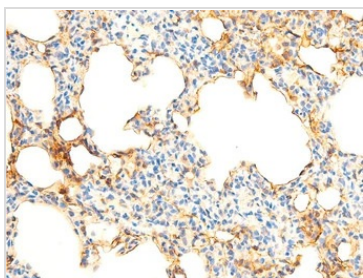
IHC-P analysis of mouse gastric tissue using GTX05029 IKB alpha (phospho Ser32/Ser36) antibody.  
Antigen retrieval : Heat mediated antigen retrieval step in citrate buffer  
Dilution : 1:100

**GTX05029 IHC-P Image**

IHC-P analysis of mouse brain tissue using GTX05029 IKB alpha (phospho Ser32/Ser36) antibody.  
Antigen retrieval : Heat mediated antigen retrieval step in citrate buffer  
Dilution : 1:100

**GTX05029 IHC-P Image**

IHC-P analysis of mouse intestinal tissue using GTX05029 IKB alpha (phospho Ser32/Ser36) antibody.  
Antigen retrieval : Heat mediated antigen retrieval step in citrate buffer  
Dilution : 1:100

**GTX05029 IHC-P Image**

IHC-P analysis of rat lung tissue using GTX05029 IKB alpha (phospho Ser32/Ser36) antibody.  
Antigen retrieval : Heat mediated antigen retrieval step in citrate buffer  
Dilution : 1:100



For full product information, images and publications, please visit our [website](#).