

## Neutrophil elastase antibody [AOCI-5]

**Cat. No. GTX05032**

<b>Host</b>	Rabbit
<b>Clonality</b>	Monoclonal
<b>Isotype</b>	IgG
<b>Applications</b>	WB, ICC/IF, IHC-P, FCM
<b>Reactivity</b>	Human, Mouse

**Package**  
100 µl

## Applications

**Application Note**

\*Optimal dilutions/concentrations should be determined by the researcher.

Suggested dilution	Recommended dilution
WB	1:500-1:2000
ICC/IF	1:50-1:200
IHC-P	1:100-1:500
FCM	1:30

Not tested in other applications.

**Calculated MW** 29 kDa. ([Note](#))

## Properties

<b>Form</b>	Liquid
<b>Buffer</b>	PBS, 150mM NaCl, 0.04%-0.05% BSA, 50%Glycerol
<b>Preservative</b>	0.02% Sodium Azide
<b>Storage</b>	Store as concentrated solution. Centrifuge briefly prior to opening vial. For short-term storage (1-2 weeks), store at 4°C. For long-term storage, aliquot and store at -20°C or below. Avoid multiple freeze-thaw cycles.
<b>Concentration</b>	Batch dependent (Please refer to the vial label for the specific concentration.)
<b>Immunogen</b>	A synthesized peptide derived from human Neutrophil Elastase
<b>Purification</b>	Purified by affinity chromatography
<b>Conjugation</b>	Unconjugated

**Note**

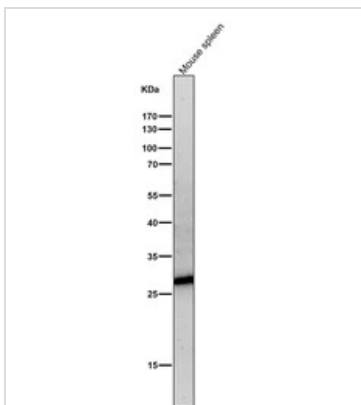
For laboratory research use only. Not for any clinical, therapeutic, or diagnostic use in humans or animals. Not for animal or human consumption.

Purchasers shall not, and agree not to enable third parties to, analyze, copy, reverse engineer or otherwise attempt to determine the structure or sequence of the product.



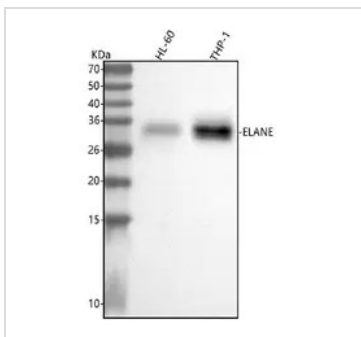
For full product information, images and publications, please visit our [website](#).

DATA IMAGES



**GTX05032 WB Image**

WB analysis of mouse spleen tissue lysate using GTX05032 Neutrophil elastase antibody [AOCl-5].  
Dilution : 1:5000



**GTX05032 WB Image**

WB analysis of various samples using GTX05032 Neutrophil elastase antibody [AOCl-5].  
Dilution : 1:500  
Loading : 30µg



For full product information, images and publications, please visit our [website](#).