

Human CRP protein

Cat. No. GTX05053-pro

Species Human

Package
50 µg

Applications

Observed MW (kDa) 25 kDa.

Properties

Form Lyophilized powder

Buffer Reconstitute with ddH₂O to 0.1-1.0 mg/mL. Do not vortex. Lyophilized from 20mM Tris, 280mM NaCl, 5mM CaCl₂, 5% Trehalose.

Preservative 0.09% Sodium Azide

Storage Store at -20°C or below. After reconstitution, keep as concentrated solution. Aliquot and store at -20°C or below. Avoid freeze-thaw cycles.

Region/Sequence Native human CRP protein

Expression System Natural extract from human

Purification Purified by salt co-precipitation and ionic-Exchange chromatography

Purity >98% as determined by SDS-PAGE

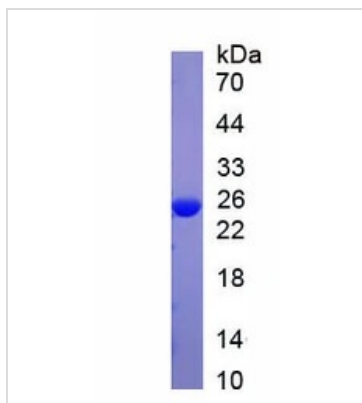
Conjugation Unconjugated

Note

For laboratory research use only. Not for any clinical, therapeutic, or diagnostic use in humans or animals. Not for animal or human consumption.

Purchasers shall not, and agree not to enable third parties to, analyze, copy, reverse engineer or otherwise attempt to determine the structure or sequence of the product.

DATA IMAGES



GTX05053-pro Image

SDS-PAGE of GTX05053-pro Human CRP protein.



For full product information, images and publications, please visit our [website](#).