

CIDE B antibody

Cat. No. GTX05061

| | |
|--------------|-------------------|
| Host | Rabbit |
| Clonality | Polyclonal |
| Isotype | IgG |
| Applications | WB, IHC-P, ELISA |
| Reactivity | Human, Mouse, Rat |

Package

100 µg

Applications

Application Note

*Optimal dilutions/concentrations should be determined by the researcher.

| Suggested dilution | Recommended dilution |
|--------------------|----------------------|
| WB | 1-2 µg/ml |
| IHC-P | 5-20 µg/ml |
| ELISA | Assay dependent |

Not tested in other applications.

Calculated MW 25 kDa. ([Note](#))

Product Note CIDE-B antibody has no cross activity to CIDE-A.

Properties

| | |
|---------------|---|
| Form | Liquid |
| Buffer | PBS |
| Preservative | 0.02% Sodium Azide |
| Storage | Store as concentrated solution. Centrifuge briefly prior to opening vial. Aliquot and store at -20°C or below. Avoid multiple freeze-thaw cycles. |
| Concentration | 1 mg/ml (Please refer to the vial label for the specific concentration.) |
| Immunogen | A synthetic peptide corresponding to 15 amino acid near the carboxy terminus of human CIDE-B. |
| Purification | Purified by antigen-affinity chromatography |
| Conjugation | Unconjugated |



For full product information, images and publications, please visit our [website](#).

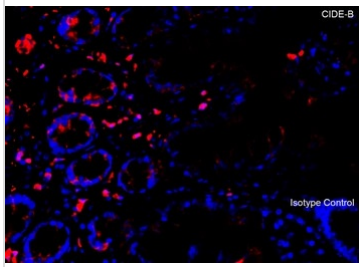
Date 2025 / 07 / 16 Page 1 of 2

For laboratory research use only. Not for any clinical, therapeutic, or diagnostic use in humans or animals. Not for animal or human consumption.

Note

Purchasers shall not, and agree not to enable third parties to, analyze, copy, reverse engineer or otherwise attempt to determine the structure or sequence of the product.

DATA IMAGES



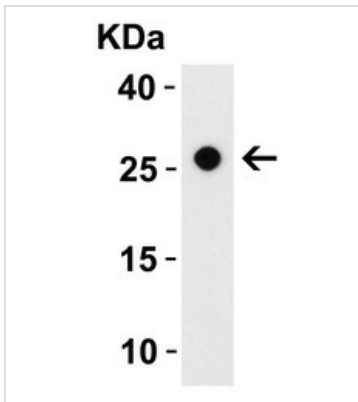
GTx05061 IHC-P Image

IHC-P analysis of human small intestine tissue using GTX05061 CIDE B antibody.

Red : Primary antibody

Blue : DAPI

Dilution : 10 µg/ml

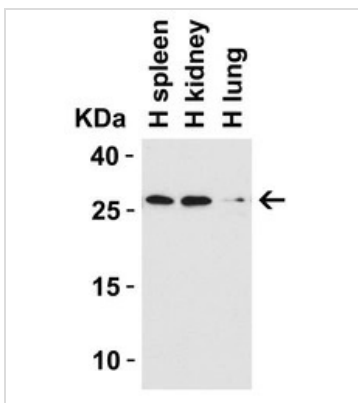


GTx05061 WB Image

WB analysis of mouse small intestine tissue lysate using GTX05061 CIDE B antibody.

Dilution : 1 µg/mL

Loading : 15µg



GTx05061 WB Image

WB analysis of various human tissue lysates using GTX05061 CIDE B antibody.

Dilution : 1 µg/mL

Loading : 15µg



For full product information, images and publications, please visit our [website](https://www.genetex.com).