

Annexin V (PE)

Cat. No. GTX05073

Applications	FCM
Reactivity	Species independent

Package
100 test

PRODUCT

Summary Annexin V (PE) is intended for detection of early apoptotic cells by flow cytometry. One vial contains 0.5 ml of Ready-to-use solution.

Applications

Application Note

*Optimal dilutions/concentrations should be determined by the researcher.

Suggested dilution	Recommended dilution
FCM	Assay dependent

Not tested in other applications.

Properties

Form	Liquid
Buffer	PBS
Preservative	15 mM Sodium Azide
Storage	Store as concentrated solution. Centrifuge briefly prior to opening vial. Store at 4°C. DO NOT FREEZE. Protect from light.
Concentration	Batch dependent (Please refer to the vial label for the specific concentration.)
Purification	Purified by size-exclusion chromatography
Conjugation	Phycoerythrin (PE) Wavelength

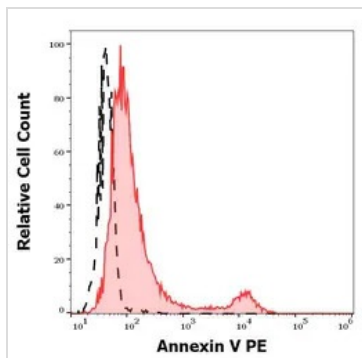
Note For laboratory research use only. Not for any clinical, therapeutic, or diagnostic use in humans or animals. Not for animal or human consumption.

Purchasers shall not, and agree not to enable third parties to, analyze, copy, reverse engineer or otherwise attempt to determine the structure or sequence of the product.



For full product information, images and publications, please visit our [website](#).

DATA IMAGES



GTX05073 FCM Image

FCM analysis of apoptotic Jurkat cells with camptothecin induction using GTX05073 Annexin V (PE).

Red line : Primary antibody

Black line : Unstained cells

Dilution : 5 μ l/1x10⁶ cells



For full product information, images and publications, please visit our [website](#).