

SLC16A5 antibody

Cat. No. GTX05079

Host	Rabbit
Clonality	Polyclonal
Isotype	IgG
Applications	WB, ICC/IF, IHC-P
Reactivity	Human, Mouse, Rat

Package
100 µl

Applications

Application Note

*Optimal dilutions/concentrations should be determined by the researcher.

Suggested dilution	Recommended dilution
WB	1:1000-1:3000
ICC/IF	1:100-1:500
IHC-P	1:50-1:200

Not tested in other applications.

Calculated MW 55 kDa. ([Note](#))

Properties

Form	Liquid
Buffer	PBS, 150mM NaCl, 50% Glycerol
Preservative	0.02% Sodium Azide
Storage	Store as concentrated solution. Centrifuge briefly prior to opening vial. For short-term storage (1-2 weeks), store at 4°C. For long-term storage, aliquot and store at -20°C or below. Avoid multiple freeze-thaw cycles.
Concentration	1 mg/ml (Please refer to the vial label for the specific concentration.)
Immunogen	A synthesized peptide derived from human MOT6, corresponding to a region within the internal amino acids.
Purification	Purified by antigen-affinity chromatography From serum
Conjugation	Unconjugated

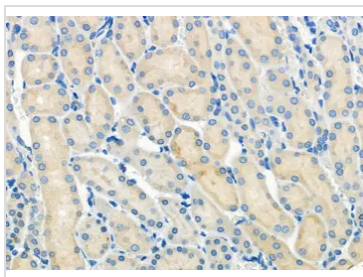
Note

For laboratory research use only. Not for any clinical, therapeutic, or diagnostic use in humans or animals. Not for animal or human consumption.

Purchasers shall not, and agree not to enable third parties to, analyze, copy, reverse engineer or otherwise attempt to determine the structure or sequence of the product.



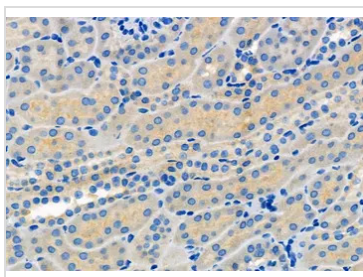
For full product information, images and publications, please visit our [website](#).

DATA IMAGES

GTx05079 IHC-P Image

IHC-P analysis of rat kidney tissue using GTx05079 SLC16A5 antibody.

Antigen retrieval : Heat mediated antigen retrieval performed with citrate buffer

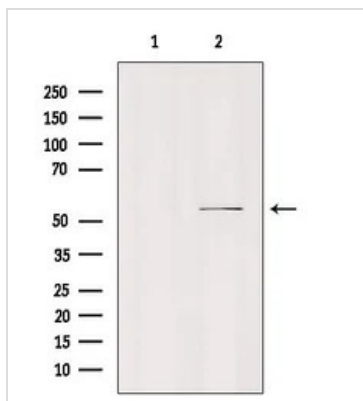
Dilution : 1:100


GTx05079 IHC-P Image

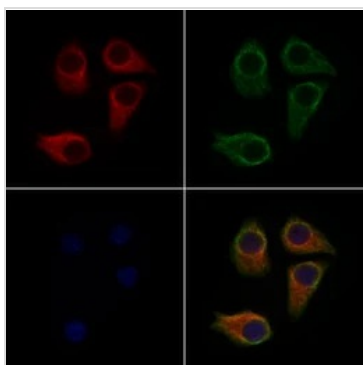
IHC-P analysis of mouse kidney tissue using GTx05079 SLC16A5 antibody.

Antigen retrieval : Heat mediated antigen retrieval performed with citrate buffer

Dilution : 1:100


GTx05079 WB Image

WB analysis of mouse brain tissue lysate using GTx05079 SLC16A5 antibody. The lane on the left was treated with blocking peptide.


GTx05079 ICC/IF Image

ICC/IF analysis of PFA-fixed HeLa cells using GTx05079 SLC16A5 antibody.

Red : Primary antibody

Green : beta tubulin

Blue : DAPI

Dilution : 1:200

Permeabilization : 0.1% Triton X-100



For full product information, images and publications, please visit our [website](https://www.genetex.com).