

FAK (phospho Tyr861) antibody

Cat. No. GTX05090

Host	Rabbit
Clonality	Polyclonal
Isotype	IgG
Applications	WB, ELISA
Reactivity	Human, Mouse

Package
100 µl

Applications

Application Note

*Optimal dilutions/concentrations should be determined by the researcher.

Suggested dilution	Recommended dilution
WB	1:500-1:2000
ELISA	Assay dependent

Not tested in other applications.

Calculated MW 119 kDa. ([Note](#))

Properties

Form	Liquid
Buffer	PBS, 150mM NaCl, 50% Glycerol
Preservative	0.02% Sodium Azide
Storage	Store as concentrated solution. Centrifuge briefly prior to opening vial. For short-term storage (1-2 weeks), store at 4°C. For long-term storage, aliquot and store at -20°C or below. Avoid multiple freeze-thaw cycles.
Concentration	1 mg/ml (Please refer to the vial label for the specific concentration.)
Immunogen	A synthesized peptide derived from human FAK around the phosphorylation site of Tyr861.
Purification	Purified by affinity chromatography via sequential chromatography on phospho-peptide and non-phospho-peptide affinity columns
Conjugation	Unconjugated

Note

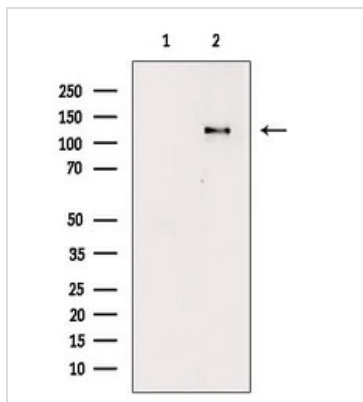
For laboratory research use only. Not for any clinical, therapeutic, or diagnostic use in humans or animals. Not for animal or human consumption.

Purchasers shall not, and agree not to enable third parties to, analyze, copy, reverse engineer or otherwise attempt to determine the structure or sequence of the product.



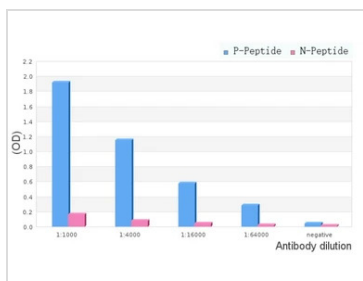
For full product information, images and publications, please visit our [website](#).

DATA IMAGES



GTX05090 WB Image

WB analysis of NIH-3T3 cells with H₂O₂ treatment using GTX05090 FAK (phospho Tyr861) antibody. The lane on the left was treated with blocking peptide.



GTX05090 ELISA Image

ELISA analysis of phospho- and non phospho- immunogen peptide using serial diluted GTX05090 FAK (phospho Tyr861) antibody.

P-peptide : phospho-peptide

N-peptide : non-phospho-peptide

Peptides concentration : 1 µg/mL



For full product information, images and publications, please visit our [website](#).