

## FAK (phospho Tyr861) antibody

**Cat. No. GTX05090**

<b>Host</b>	Rabbit
<b>Clonality</b>	Polyclonal
<b>Isotype</b>	IgG
<b>Applications</b>	WB, ELISA
<b>Reactivity</b>	Human, Mouse

**Package**  
100 µl

## Applications

**Application Note**

\*Optimal dilutions/concentrations should be determined by the researcher.

Suggested dilution	Recommended dilution
WB	1:500-1:2000
ELISA	Assay dependent

Not tested in other applications.

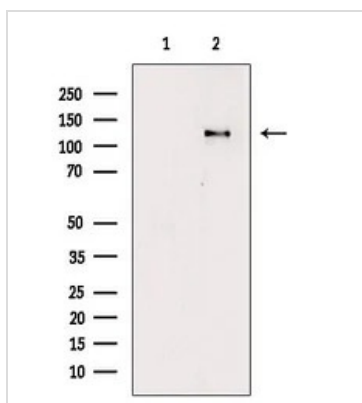
**Calculated MW** 119 kDa. ([Note](#))

## Properties

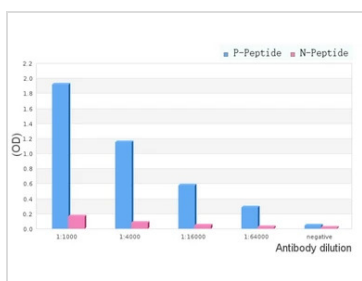
<b>Form</b>	Liquid
<b>Buffer</b>	PBS, 150mM NaCl, 50% Glycerol
<b>Preservative</b>	0.02% Sodium Azide
<b>Storage</b>	Store as concentrated solution. Centrifuge briefly prior to opening vial. For short-term storage (1-2 weeks), store at 4°C. For long-term storage, aliquot and store at -20°C or below. Avoid multiple freeze-thaw cycles.
<b>Concentration</b>	1 mg/ml (Please refer to the vial label for the specific concentration.)
<b>Immunogen</b>	A synthesized peptide derived from human FAK around the phosphorylation site of Tyr861.
<b>Purification</b>	Purified by affinity chromatography via sequential chromatography on phospho-peptide and non-phospho-peptide affinity columns
<b>Conjugation</b>	Unconjugated
<b>Note</b>	For laboratory research use only. Not for any clinical, therapeutic, or diagnostic use in humans or animals. Not for animal or human consumption.  Purchasers shall not, and agree not to enable third parties to, analyze, copy, reverse engineer or otherwise attempt to determine the structure or sequence of the product.



For full product information, images and publications, please visit our [website](#).

**DATA IMAGES**

**GTX05090 WB Image**

WB analysis of NIH-3T3 cells with H<sub>2</sub>O<sub>2</sub> treatment using GTX05090 FAK (phospho Tyr861) antibody. The lane on the left was treated with blocking peptide.


**GTX05090 ELISA Image**

ELISA analysis of phospho- and non phospho- immunogen peptide using serial diluted GTX05090 FAK (phospho Tyr861) antibody.

P-peptide : phospho-peptide

N-peptide : non-phospho-peptide

Peptides concentration : 1 µg/mL



For full product information, images and publications, please visit our [website](#).