

Laminin gamma 2 antibody

Cat. No. GTX05124

Host	Rabbit
Clonality	Polyclonal
Isotype	IgG
Applications	WB, ICC/IF, IHC-P
Reactivity	Human, Mouse, Rat

Package
100 µl

Applications

Application Note

*Optimal dilutions/concentrations should be determined by the researcher.

Suggested dilution	Recommended dilution
WB	1:1000-1:5000
ICC/IF	1:50-1:100
IHC-P	1:50-1:100

Not tested in other applications.

Calculated MW 131 kDa. ([Note](#))

Properties

Form	Liquid
Buffer	PBS, 50% Glycerol
Preservative	Proclin300 or Sodium azide
Storage	Store as concentrated solution. Centrifuge briefly prior to opening vial. For short-term storage (1-2 weeks), store at 4°C. For long-term storage, aliquot and store at -20°C or below. Avoid multiple freeze-thaw cycles.
Concentration	Batch dependent (Please refer to the vial label for the specific concentration.)
Immunogen	Recombinant fragment (around aa746-860) of human LAMC2 protein. The exact sequence is proprietar
Purification	Purified by affinity chromatography
Conjugation	Unconjugated

Note

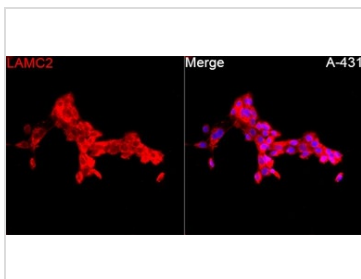
For laboratory research use only. Not for any clinical, therapeutic, or diagnostic use in humans or animals. Not for animal or human consumption.

Purchasers shall not, and agree not to enable third parties to, analyze, copy, reverse engineer or otherwise attempt to determine the structure or sequence of the product.



For full product information, images and publications, please visit our [website](#).

DATA IMAGES



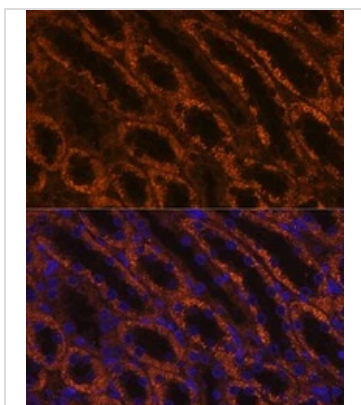
GTx05124 ICC/IF Image

ICC/IF analysis of A431 cells using GTx05124 Laminin gamma 2 antibody.

Orange : Primary antibody

Blue : DAPI

Dilution : 1:100



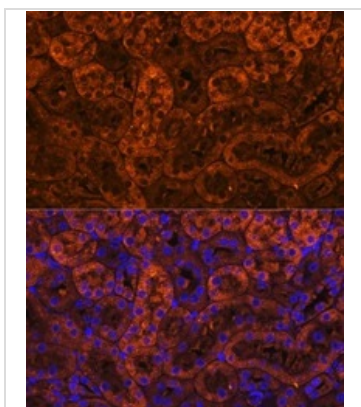
GTx05124 IHC-P Image

IHC-P analysis of rat kidney tissue using GTx05124 Laminin gamma 2 antibody.

Orange : Primary antibody

Blue : DAPI

Dilution : 1:100



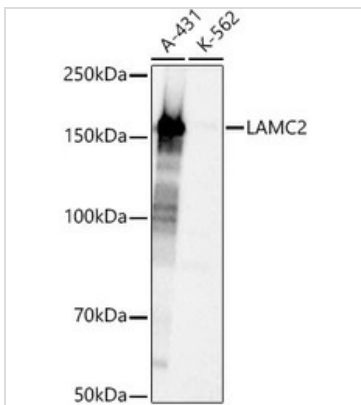
GTx05124 IHC-P Image

IHC-P analysis of mouse kidney tissue using GTx05124 Laminin gamma 2 antibody.

Orange : Primary antibody

Blue : DAPI

Dilution : 1:100



GTx05124 WB Image

WB analysis of various samples using GTx05124 Laminin gamma 2 antibody.

Loading : 25µg

Dilution : 1:3000



For full product information, images and publications, please visit our [website](#).