

YY1 antibody [GT1162]

Cat. No. GTX08969

Host	Rabbit
Clonality	Monoclonal
Isotype	IgG
Applications	WB, ICC/IF, IP, ChIP assay
Reactivity	Human, Mouse

Package
100 µl

Applications

Application Note

*Optimal dilutions/concentrations should be determined by the researcher.

Suggested dilution	Recommended dilution
WB	1:500 - 1:2000
ICC/IF	1:50 - 1:200
IP	Assay dependent
ChIP assay	Assay dependent

Not tested in other applications.

Calculated MW 45 kDa. ([Note](#))

Properties

Form	Liquid
Buffer	PBS, 50% Glycerol
Preservative	0.02% Sodium azide
Storage	Store as concentrated solution. Centrifuge briefly prior to opening vial. For short-term storage (1-2 weeks), store at 4°C. For long-term storage, aliquot and store at -20°C or below. Avoid multiple freeze-thaw cycles.
Concentration	Batch dependent (Please refer to the vial label for the specific concentration.)
Immunogen	A synthesized peptide derived from human YY1
Purification	Purified by affinity chromatography
Conjugation	Unconjugated

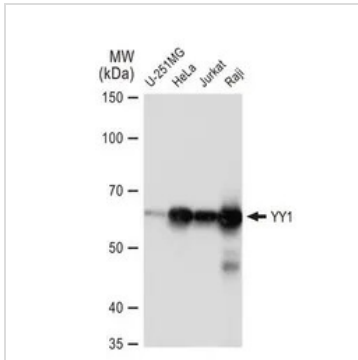
Note

For laboratory research use only. Not for any clinical, therapeutic, or diagnostic use in humans or animals. Not for animal or human consumption.

Purchasers shall not, and agree not to enable third parties to, analyze, copy, reverse engineer or otherwise attempt to determine the structure or sequence of the product.



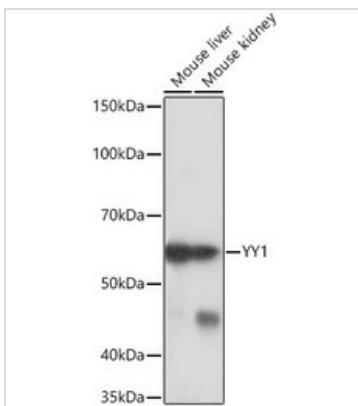
For full product information, images and publications, please visit our [website](#).

DATA IMAGES

GTX08969 WB Image

WB analysis of various samples using GTX08969 YY1 antibody [GT1162].

Dilution : 1:1000

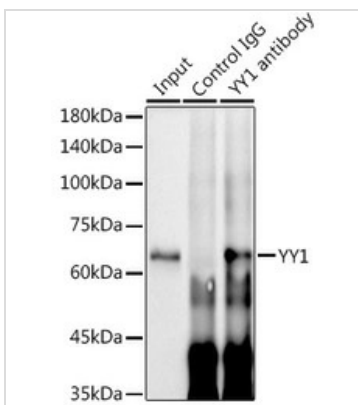
Loading : 25 µg


GTX08969 WB Image

WB analysis of various samples using GTX08969 YY1 antibody [GT1162].

Loading : 25µg

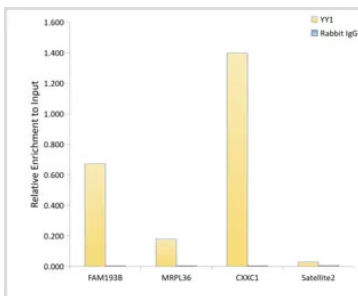
Dilution : 1:1000


GTX08969 WB IP Image

IP analysis of HeLa cell lysate using GTX08969 YY1 antibody [GT1162].

IP antibody amount : 3µg / 300µg extracts

Dilution : 1:2000


GTX08969 ChIP assay Image

ChIP analysis of 293T cell lysate using GTX08969 YY1 antibody [GT1162]. The amount of immunoprecipitated DNA was checked by quantitative PCR. Histogram was constructed by the ratios of the immunoprecipitated DNA to the input.



For full product information, images and publications, please visit our [website](http://www.genetex.com).