

## Hsp90 beta antibody [GT1164]

Cat. No. GTX09012

Host	Rabbit
Clonality	Monoclonal
Isotype	IgG
Applications	WB, ICC/IF
Reactivity	Human, Mouse, Rat

References ( 1 )

Package

100 µl

## Applications

## Application Note

\*Optimal dilutions/concentrations should be determined by the researcher.

Suggested dilution	Recommended dilution
WB	1:500 - 1:2000
ICC/IF	1:50 - 1:200

Not tested in other applications.

Calculated MW 83 kDa. ( [Note](#) )

## Properties

Form	Liquid
Buffer	PBS, 50% Glycerol
Preservative	0.02% Sodium azide
Storage	Store as concentrated solution. Centrifuge briefly prior to opening vial. For short-term storage (1-2 weeks), store at 4°C. For long-term storage, aliquot and store at -20°C or below. Avoid multiple freeze-thaw cycles.
Concentration	Batch dependent (Please refer to the vial label for the specific concentration.)
Immunogen	A synthesized peptide derived from human Hsp90 beta
Purification	Purified by affinity chromatography
Conjugation	Unconjugated

## Note

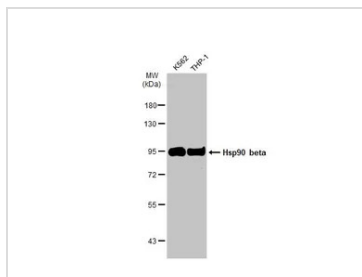
For laboratory research use only. Not for any clinical, therapeutic, or diagnostic use in humans or animals. Not for animal or human consumption.

Purchasers shall not, and agree not to enable third parties to, analyze, copy, reverse engineer or otherwise attempt to determine the structure or sequence of the product.



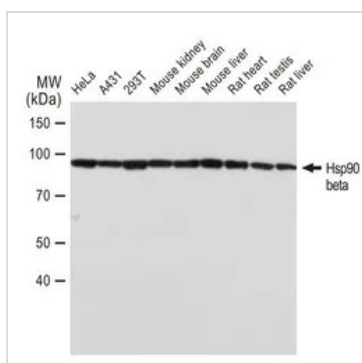
For full product information, images and publications, please visit our [website](#).

DATA IMAGES



**GTX09012 WB Image**

Various whole cell extracts (30 µg) were separated by 7.5% SDS-PAGE, and the membrane was blotted with Hsp90 beta antibody [GT1164] (GTX09012) diluted at 1:1000. The HRP-conjugated anti-rabbit IgG antibody (GTX213110-01) was used to detect the primary antibody.

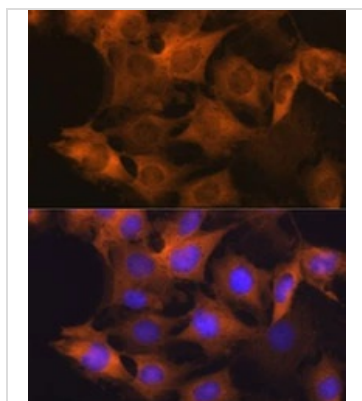


**GTX09012 WB Image**

WB analysis of various samples using GTX09012 Hsp90 beta antibody [GT1164].

Dilution : 1:1000

Loading : 25 µg

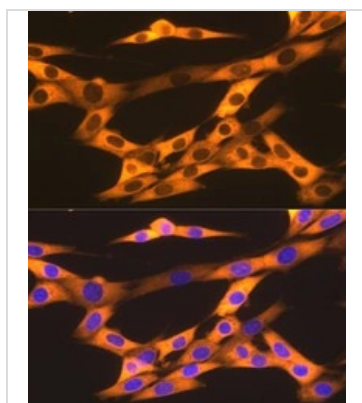


**GTX09012 ICC/IF Image**

ICC/IF analysis of C6 cells using GTX09012 Hsp90 beta antibody [GT1164].

Orange: Primary antibody

Blue: DAPI



**GTX09012 ICC/IF Image**

ICC/IF analysis of NIH3T3 cells using GTX09012 Hsp90 beta antibody [GT1164].

Orange: Primary antibody

Blue: DAPI



For full product information, images and publications, please visit our [website](https://www.genetex.com).