

GPR30 antibody

Cat. No. GTX100001

Host	Rabbit
Clonality	Polyclonal
Isotype	IgG
Application	WB, IHC
Reactivity	Human, Pig

Reference (3)

Package

100 µl, 25 µl

APPLICATION

Application Note

*Optimal dilutions/concentrations should be determined by the researcher.

Suggested dilution	Recommended dilution
WB	1:500-1:3000
IHC	Assay dependent

Note : As is commonly seen with membrane proteins, significant hydrophobicity can lead to aggregation following boiling of samples prior to SDS-PAGE and subsequent western blotting. We recommend to avoid boiling in this case.

Not tested in other applications.

Calculated MW 42 kDa. ([Note](#))

PROPERTIES

Form	Liquid
Buffer	PBS, 20% Glycerol
Preservative	0.01% Thimerosal
Storage	Store as concentrated solution. Centrifuge briefly prior to opening vial. For short-term storage (1-2 weeks), store at 4°C. For long-term storage, aliquot and store at -20°C or below. Avoid multiple freeze-thaw cycles.
Concentration	1 mg/ml (Please refer to the vial label for the specific concentration.)
Immunogen	Synthetic peptide encompassing a sequence within the Extracellular domain of human GPR30. The exact sequence is proprietary.
Purification	Purified by antigen-affinity chromatography.
Conjugation	Unconjugated



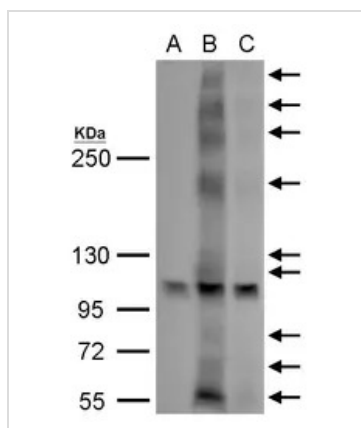
For full product information, images and publications, please visit our [website](#).

For laboratory research use only. Not for any clinical, therapeutic, or diagnostic use in humans or animals. Not for animal or human consumption.

Note

Purchasers shall not, and agree not to enable third parties to, analyze, copy, reverse engineer or otherwise attempt to determine the structure or sequence of the product.

DATA IMAGES



GTx100001 WB Image

GPR30 antibody detects GPR30 protein by western blot analysis.

A. 50 µg 293T whole cell lysate/extract

B. 50 µg whole cell lysate/extract of GFP-human GPR30-transfected 293T cells (No boiling)

C. 50 µg whole cell lysate/extract of GFP-human GPR30 and GPR30 siRNA-transfected 293T cells (No boiling)

5% SDS-PAGE

GPR30 antibody (GTx100001) dilution: 1:1000

The HRP-conjugated anti-rabbit IgG antibody (GTx213110-01) was used to detect the primary antibody.

Due to the high tendency to aggregate, GPR30 samples were not boiled in the SDS gel-loading buffer before electrophoresis.



For full product information, images and publications, please visit our [website](https://www.genetex.com).