

LHR antibody [C3], C-term

Cat. No. GTX100008

Host	Rabbit
Clonality	Polyclonal
Isotype	IgG
Application	WB, IHC-P
Reactivity	Human, Mouse

[Reference \(2 \)](#)

Package

100 µl, 25 µl

APPLICATION

Application Note

*Optimal dilutions/concentrations should be determined by the researcher.

Suggested dilution	Recommended dilution
WB	1:500-1:3000
IHC-P	1:100-1:1000

Not tested in other applications.

Calculated MW 79 kDa. ([Note](#))

PROPERTIES

Form	Liquid
Buffer	PBS, 20% Glycerol
Preservative	0.01% Thimerosal
Storage	Store as concentrated solution. Centrifuge briefly prior to opening vial. For short-term storage (1-2 weeks), store at 4°C. For long-term storage, aliquot and store at -20°C or below. Avoid multiple freeze-thaw cycles.
Concentration	1 mg/ml (Please refer to the vial label for the specific concentration.)
Immunogen	Synthetic peptide encompassing a sequence within the Intracellular domain of human LHR. The exact sequence is proprietary.
Purification	Purified by antigen-affinity chromatography.
Conjugation	Unconjugated

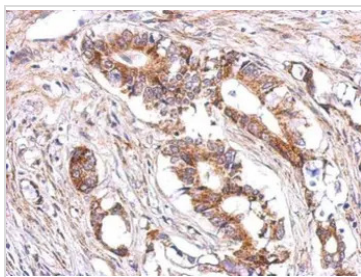
Note

For laboratory research use only. Not for any clinical, therapeutic, or diagnostic use in humans or animals. Not for animal or human consumption.

Purchasers shall not, and agree not to enable third parties to, analyze, copy, reverse engineer or otherwise attempt to determine the structure or sequence of the product.

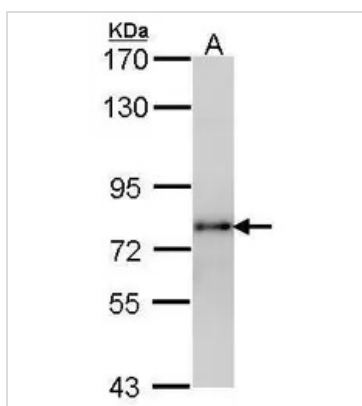


For full product information, images and publications, please visit our [website](#).

DATA IMAGES

GTX100008 IHC-P Image

Immunohistochemical analysis of paraffin-embedded human gastric cancer, using LHR(GTX100008) antibody at 1:500 dilution.

Antigen Retrieval: Trilogy™ (EDTA based, pH 8.0) buffer, 15min


GTX100008 WB Image

Sample (30 µg of whole cell lysate)

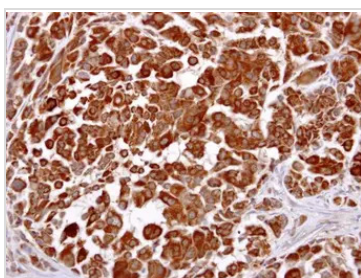
A: H1299

7.5% SDS PAGE

LHR antibody

GTX100008 diluted at 1:1000

The HRP-conjugated anti-rabbit IgG antibody (GTX213110-01) was used to detect the primary antibody.


GTX100008 IHC-P Image

LHR antibody [C3], C-term detects LHR protein at cytosol on human lung carcinoma by immunohistochemical analysis.

Sample: LHR antibody [C3], C-term (GTX100008) dilution: 1:250.

Antigen Retrieval: Trilogy™ (EDTA based, pH 8.0) buffer, 15min


GTX100008 IHC-P Image

The data was published in the journal Sci Rep in 2017. [PMID: 28102204](https://pubmed.ncbi.nlm.nih.gov/28102204/)



For full product information, images and publications, please visit our [website](https://www.genetex.com).