

EDG7 antibody [N3C2], Internal

Cat. No. GTX100018

Host	Rabbit
Clonality	Polyclonal
Isotype	IgG
Applications	WB, IHC-P
Reactivity	Human, Mouse

References (3)

Package

100 µl, 25 µl

Applications

Application Note

*Optimal dilutions/concentrations should be determined by the researcher.

Suggested dilution	Recommended dilution
WB	1:500-1:3000
IHC-P	1:100-1:1000

Not tested in other applications.

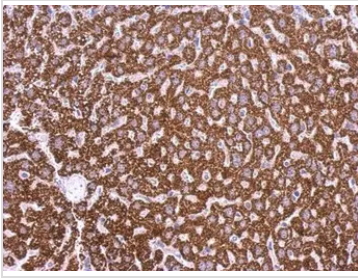
Calculated MW 40 kDa. ([Note](#))

Properties

Form	Liquid
Buffer	PBS, 20% Glycerol
Preservative	0.01% Thimerosal
Storage	Store as concentrated solution. Centrifuge briefly prior to opening vial. For short-term storage (1-2 weeks), store at 4°C. For long-term storage, aliquot and store at -20°C or below. Avoid multiple freeze-thaw cycles.
Concentration	1 mg/ml (Please refer to the vial label for the specific concentration.)
Immunogen	Synthetic peptide encompassing a sequence within the Intracellular domain of human EDG7. The exact sequence is proprietary.
Purification	Purified by antigen-affinity chromatography.
Conjugation	Unconjugated
Note	For laboratory research use only. Not for any clinical, therapeutic, or diagnostic use in humans or animals. Not for animal or human consumption. Purchasers shall not, and agree not to enable third parties to, analyze, copy, reverse engineer or otherwise attempt to determine the structure or sequence of the product.

For full product information, images and publications, please visit our [website](#).

DATA IMAGES

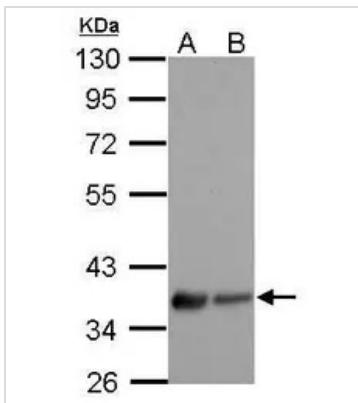
**GTX100018 IHC-P Image**

EDG7 antibody [N3C2], Internal detects EDG7 protein at cytosol on mouse kidney by immunohistochemical analysis.

Sample: Paraffin-embedded mouse kidney.

EDG7 antibody [N3C2], Internal (GTX100018) dilution: 1:500.

Antigen Retrieval: Trilogy™ (EDTA based, pH 8.0) buffer, 15min

**GTX100018 WB Image**

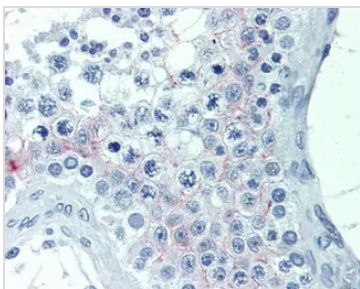
EDG7 antibody [N3C2], Internal detects LPAR3 protein by Western blot analysis.

A. 30 µg NT2D1 whole cell lysate/extract

B. 30 µg PC-3 whole cell lysate/extract

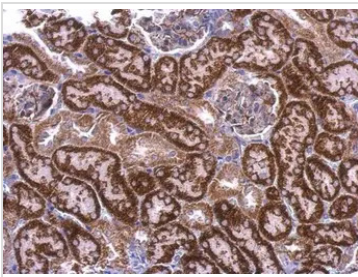
10 % SDS-PAGE

EDG7 antibody [N3C2], Internal (GTX100018) dilution: 1:1000

**GTX100018 IHC-P Image**

Immunohistochemical analysis of paraffin-embedded human testis, using EDG7(GTX100018) antibody(20 µg/ml).

Antigen Retrieval: Trilogy™ (EDTA based, pH 8.0) buffer, 15min

**GTX100018 IHC-P Image**

EDG7 antibody [N3C2], Internal detects EDG7 protein at cytosol on mouse kidney by immunohistochemical analysis.

Sample: Paraffin-embedded mouse kidney.

EDG7 antibody [N3C2], Internal (GTX100018) dilution: 1:500.

Antigen Retrieval: Trilogy™ (EDTA based, pH 8.0) buffer, 15min



For full product information, images and publications, please visit our [website](#).