

CXCR7 antibody [C1C2], Internal

Cat. No. GTX100027

Host	Rabbit
Clonality	Polyclonal
Isotype	IgG
Applications	WB, ICC/IF, IHC-P, IHC-Fr, FCM, IP, ELISA
Reactivity	Human, Mouse, Rat

References (26)

★★★★★ Review (1)

Package

100 µl, 25 µl

PRODUCT

Summary

CXCR7 antibody recognizes C-X-C chemokine receptor type 7 (CXCR7), now known as atypical chemokine receptor 3 (ACKR3). This chemokine receptor (with a predicted molecular weight of 41 kDa) binds the chemokines CXCL11 and CXCL12 and other non-chemokine ligands such as adrenomedullin and MIF. ACKR3 plays important roles in cardiovascular and neuronal development and acts as a scavenger receptor to regulate both chemokine- and opioid peptide-dependent signaling.

Applications

Application Note

*Optimal dilutions/concentrations should be determined by the researcher.

Suggested dilution	Recommended dilution
WB	1:500-1:3000
ICC/IF	1:100-1:1000
IHC-P	1:100-1:1000
IHC-Fr	Assay dependent
FCM	Assay dependent
IP	Assay dependent
ELISA	Assay dependent

Not tested in other applications.

Calculated MW 41 kDa. ([Note](#))

Product Note KO/KD validation is based on published data (PMID: 32366833).

Properties

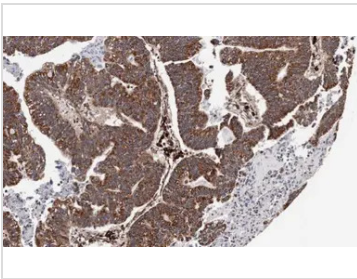
Form	Liquid
Buffer	PBS, 1% BSA, 20% Glycerol
Preservative	0.025% ProClin 300



For full product information, images and publications, please visit our [website](#).

Storage	Store as concentrated solution. Centrifuge briefly prior to opening vial. For short-term storage (1-2 weeks), store at 4°C. For long-term storage, aliquot and store at -20°C or below. Avoid multiple freeze-thaw cycles.
Concentration	0.14 mg/ml (Please refer to the vial label for the specific concentration.)
Immunogen	Synthetic peptide encompassing a sequence within the Intracellular domain of human CXCR7. The exact sequence is proprietary.
Purification	Purified by antigen-affinity chromatography.
Conjugation	Unconjugated
Note	For laboratory research use only. Not for any clinical, therapeutic, or diagnostic use in humans or animals. Not for animal or human consumption. Purchasers shall not, and agree not to enable third parties to, analyze, copy, reverse engineer or otherwise attempt to determine the structure or sequence of the product.

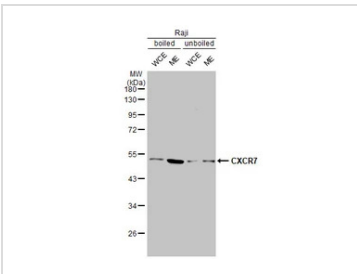
DATA IMAGES



GTx100027 IHC-P Image

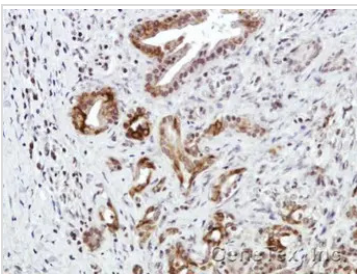
Immunohistochemical analysis of paraffin-embedded human gastric cancer, using CXCR7(GTX100027) antibody at 1:100 dilution.

Antigen Retrieval: Trilogy™ (EDTA based, pH 8.0) buffer, 15min



GTx100027 WB Image

Boiled and unboiled Raji whole cell and membrane extracts (30 µg) were separated by 10% SDS-PAGE, and the membrane was blotted with CXCR7 antibody [C1C2], Internal (GTX100027) diluted at 1:5000. The HRP-conjugated anti-rabbit IgG antibody (GTX213110-01) was used to detect the primary antibody, and the signal was developed with Trident ECL plus-Enhanced. (WCE: whole cell extract; ME: membrane extract)



GTx100027 IHC-P Image

Immunohistochemical analysis of paraffin-embedded Human pancreatic tumor, using CXCR7(GTX100027) antibody at 1:100 dilution.

Antigen Retrieval: Trilogy™ (EDTA based, pH 8.0) buffer, 15min



For full product information, images and publications, please visit our [website](https://www.genetex.com).