

## CXCR7 antibody [C1C2], Internal

Cat. No. GTX100027

Host	Rabbit
Clonality	Polyclonal
Isotype	IgG
Applications	WB, ICC/IF, IHC-P, IHC-Fr, FCM, IP, ELISA
Reactivity	Human, Mouse, Rat

References ( 25 )

★★★★★ Review ( 1 )

Package

100 µl, 25 µl

## PRODUCT

## Summary

CXCR7 antibody recognizes C-X-C chemokine receptor type 7 (CXCR7), now known as atypical chemokine receptor 3 (ACKR3). This chemokine receptor (with a predicted molecular weight of 41 kDa) binds the chemokines CXCL11 and CXCL12 and other non-chemokine ligands such as adrenomedullin and MIF. ACKR3 plays important roles in cardiovascular and neuronal development and acts as a scavenger receptor to regulate both chemokine- and opioid peptide-dependent signaling.

## Applications

## Application Note

\*Optimal dilutions/concentrations should be determined by the researcher.

Suggested dilution	Recommended dilution
WB	1:500-1:3000
ICC/IF	1:100-1:1000
IHC-P	1:100-1:1000
IHC-Fr	Assay dependent
FCM	Assay dependent
IP	Assay dependent
ELISA	Assay dependent

Not tested in other applications.

**Calculated MW** 41 kDa. ( [Note](#) )

**Product Note** KO/KD validation is based on published data (PMID: 32366833).

## Properties

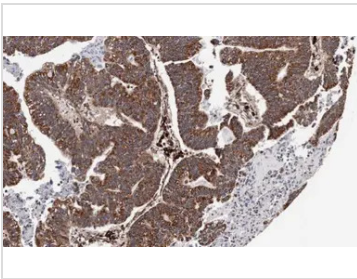
Form	Liquid
Buffer	PBS, 1% BSA, 20% Glycerol
Preservative	0.025% ProClin 300



For full product information, images and publications, please visit our [website](#).

<b>Storage</b>	Store as concentrated solution. Centrifuge briefly prior to opening vial. For short-term storage (1-2 weeks), store at 4°C. For long-term storage, aliquot and store at -20°C or below. Avoid multiple freeze-thaw cycles.
<b>Concentration</b>	0.14 mg/ml (Please refer to the vial label for the specific concentration.)
<b>Immunogen</b>	Synthetic peptide encompassing a sequence within the Intracellular domain of human CXCR7. The exact sequence is proprietary.
<b>Purification</b>	Purified by antigen-affinity chromatography.
<b>Conjugation</b>	Unconjugated
<b>Note</b>	<p>For laboratory research use only. Not for any clinical, therapeutic, or diagnostic use in humans or animals. Not for animal or human consumption.</p> <p>Purchasers shall not, and agree not to enable third parties to, analyze, copy, reverse engineer or otherwise attempt to determine the structure or sequence of the product.</p>

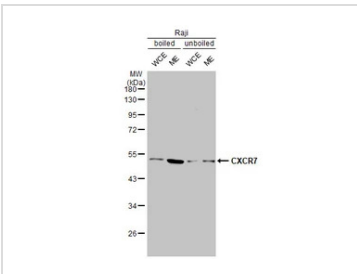
#### DATA IMAGES



#### GTX100027 IHC-P Image

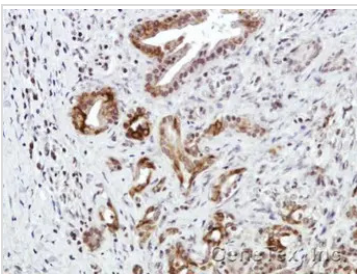
Immunohistochemical analysis of paraffin-embedded human gastric cancer, using CXCR7(GTX100027) antibody at 1:100 dilution.

Antigen Retrieval: Trilogy™ (EDTA based, pH 8.0) buffer, 15min



#### GTX100027 WB Image

Boiled and unboiled Raji whole cell and membrane extracts (30 µg) were separated by 10% SDS-PAGE, and the membrane was blotted with CXCR7 antibody [C1C2], Internal (GTX100027) diluted at 1:5000. The HRP-conjugated anti-rabbit IgG antibody (GTX213110-01) was used to detect the primary antibody, and the signal was developed with Trident ECL plus-Enhanced. (WCE: whole cell extract; ME: membrane extract)



#### GTX100027 IHC-P Image

Immunohistochemical analysis of paraffin-embedded Human pancreatic tumor, using CXCR7(GTX100027) antibody at 1:100 dilution.

Antigen Retrieval: Trilogy™ (EDTA based, pH 8.0) buffer, 15min



For full product information, images and publications, please visit our [website](https://www.genetex.com).