

# ABR antibody [C3], C-term

**Cat. No. GTX100031**

<b>Host</b>	Rabbit
<b>Clonality</b>	Polyclonal
<b>Isotype</b>	IgG
<b>Applications</b>	WB, ICC/IF
<b>Reactivity</b>	Human, Mouse

**Package**  
100 µl, 25 µl

## Applications

### Application Note

\*Optimal dilutions/concentrations should be determined by the researcher.

Suggested dilution	Recommended dilution
WB	1:500-1:3000
ICC/IF	1:100-1:1000

Not tested in other applications.

**Calculated MW** 98 kDa. ( [Note](#) )

## Properties

<b>Form</b>	Liquid
<b>Buffer</b>	PBS, 20% Glycerol
<b>Preservative</b>	0.01% Thimerosal
<b>Storage</b>	Store as concentrated solution. Centrifuge briefly prior to opening vial. For short-term storage (1-2 weeks), store at 4°C. For long-term storage, aliquot and store at -20°C or below. Avoid multiple freeze-thaw cycles.
<b>Concentration</b>	1 mg/ml (Please refer to the vial label for the specific concentration.)
<b>Immunogen</b>	Carrier-protein conjugated synthetic peptide encompassing a sequence within the C-terminus region of human ABR. The exact sequence is proprietary.
<b>Purification</b>	Purified by antigen-affinity chromatography.
<b>Conjugation</b>	Unconjugated

**Note**

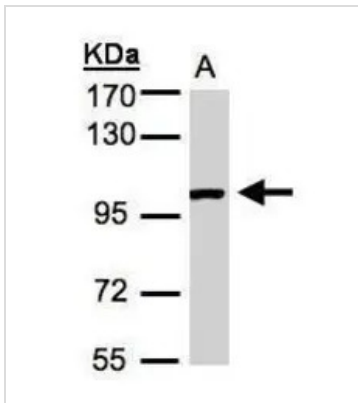
For laboratory research use only. Not for any clinical, therapeutic, or diagnostic use in humans or animals. Not for animal or human consumption.

Purchasers shall not, and agree not to enable third parties to, analyze, copy, reverse engineer or otherwise attempt to determine the structure or sequence of the product.



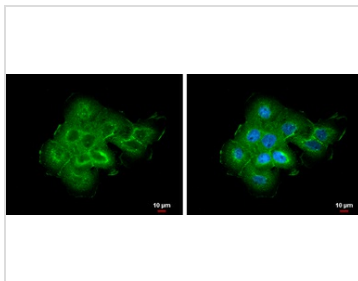
For full product information, images and publications, please visit our [website](#).

## DATA IMAGES



### GTX100031 WB Image

Sample (30µg whole cell lysate)  
A:A431(GTX27909)  
7.5% SDS PAGE  
GTX100031 diluted at 1:1000



### GTX100031 ICC/IF Image

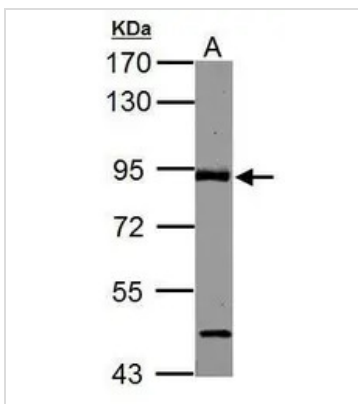
ABR antibody [C3], C-term detects ABR protein at cell membrane and cytoplasm by immunofluorescent analysis.

Sample: A431 cells were fixed in 4% paraformaldehyde at RT for 15 min.

Green: ABR protein stained by ABR antibody [C3], C-term (GTX100031) diluted at 1:500.

Blue: Hoechst 33342 staining.

Scale bar = 10 µm.



### GTX100031 WB Image

ABR antibody [C3], C-term detects ABR protein by Western blot analysis.

A. 50 µg mouse brain lysate/extract

7.5 % SDS-PAGE

ABR antibody [C3], C-term (GTX100031) dilution: 1:1000



For full product information, images and publications, please visit our [website](https://www.genetex.com).