

Iba1 antibody

Cat No. GTX100042

Host	Rabbit
Clonality	Polyclonal
Isotype	IgG
Application	WB, ICC/IF, IHC-P, IHC-Fr, FACS, IHC
Reactivity	Human, Mouse, Rat

Reference (26)

★★★★☆ Review (2)

Package

100 µl, 25 µl

APPLICATION

Application Note

*Optimal dilutions/concentrations should be determined by the researcher.

Suggested dilution	Dilution
WB	1:500-1:10000
ICC/IF	1:100-1:1000
IHC-P	1:100-1:1000
IHC-Fr	1:100-1:1000
FACS	1:50-1:200
IHC	Assay dependent

Not tested in other applications.

Calculated MW 17 kDa. ([Note](#))

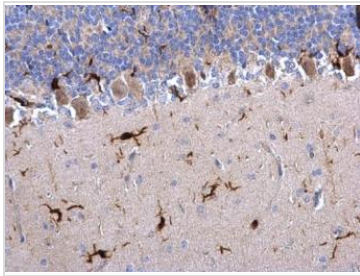
PROPERTIES

Form	Liquid
Buffer	1XPBS, 20% Glycerol (pH7). 0.025% ProClin 300 was added as a preservative.
Storage	Store as concentrated solution. Centrifuge briefly prior to opening vial. For short-term storage (1-2 weeks), store at 4°C. For long-term storage, aliquot and store at -20°C or below. Avoid multiple freeze-thaw cycles.
Concentration	0.94 mg/ml (Please refer to the vial label for the specific concentration.)
Immunogen	Carrier-protein conjugated synthetic peptide encompassing a sequence within the C-terminus region of human Iba1. The exact sequence is proprietary.
Purification	Purified by antigen-affinity chromatography.
Conjugation	Unconjugated
Note	For laboratory use only. Not for any clinical, therapeutic, or diagnostic use in humans or animals. Not for animal or human consumption.



For full product information, images and publications, please visit our [website](#).

DATA IMAGES

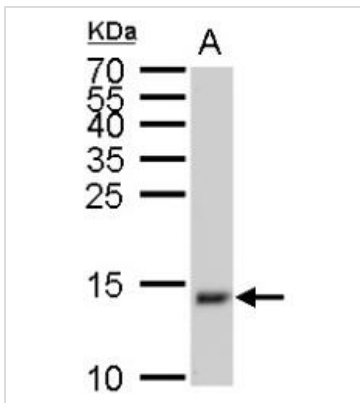
**GTX100042 IHC-P Image**

Iba1 antibody detects Iba1 protein on rat hind brain by immunohistochemical analysis.

Sample: Paraffin-embedded rat hind brain.

Iba1 antibody (GTX100042) dilution: 1:500.

Antigen Retrieval: Trilogy™ (EDTA based, pH 8.0) buffer, 15min

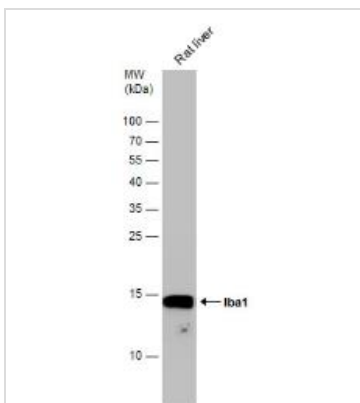
**GTX100042 WB Image**

Iba1 antibody detects Iba1 protein by Western blot analysis.

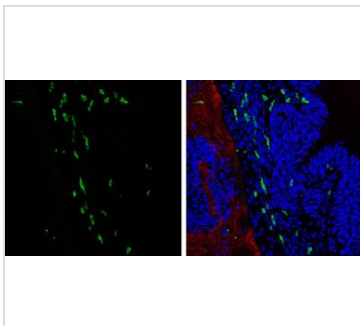
A. 50 µg mouse brain lysate/extract

15 % SDS-PAGE

Iba1 antibody (GTX100042) dilution: 1:1000

**GTX100042 WB Image**

Rat tissue extract (50 µg) was separated by 15% SDS-PAGE, and the membrane was blotted with Iba1 antibody (GTX100042) diluted at 1:1000.

**GTX100042 IHC-Fr Image**

Iba1 antibody detects Iba1 protein expression at microglia by immunohistochemical analysis.

Sample: Frozen sectioned E13.5 Rat brain.

Green: Iba1 protein stained by Iba1 antibody (GTX100042) diluted at 1:250.

Red: beta Tubulin 3/ TUJ1, a mature neuron marker, stained by beta Tubulin 3/ TUJ1 antibody [GT11710] (GTX631836) diluted at 1:500.

Blue: Fluoroshield with DAPI (GTX30920).



For full product information, images and publications, please visit our [website](#).