

## ALDH1A1 antibody [C3], C-term

Cat. No. GTX100043

Host	Rabbit
Clonality	Polyclonal
Isotype	IgG
Applications	WB, ICC/IF, IHC-P
Reactivity	Human, Mouse

References ( 1 )

Package

100 µl, 25 µl

## Applications

## Application Note

\*Optimal dilutions/concentrations should be determined by the researcher.

Suggested dilution	Recommended dilution
WB	1:5000-1:20000
ICC/IF	1:100-1:1000
IHC-P	1:100-1:1000

Not tested in other applications.

Calculated MW 55 kDa. ( [Note](#) )

## Properties

Form	Liquid
Buffer	PBS, 20% Glycerol
Preservative	0.01% Thimerosal
Storage	Store as concentrated solution. Centrifuge briefly prior to opening vial. For short-term storage (1-2 weeks), store at 4°C. For long-term storage, aliquot and store at -20°C or below. Avoid multiple freeze-thaw cycles.
Concentration	1 mg/ml (Please refer to the vial label for the specific concentration.)
Immunogen	Carrier-protein conjugated synthetic peptide encompassing a sequence within the C-terminus region of human ALDH1A1. The exact sequence is proprietary.
Purification	Purified by antigen-affinity chromatography.
Conjugation	Unconjugated

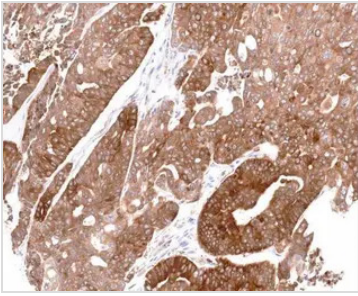
## Note

For laboratory research use only. Not for any clinical, therapeutic, or diagnostic use in humans or animals. Not for animal or human consumption.

Purchasers shall not, and agree not to enable third parties to, analyze, copy, reverse engineer or otherwise attempt to determine the structure or sequence of the product.

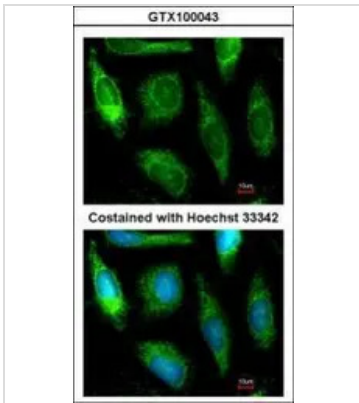


For full product information, images and publications, please visit our [website](#).

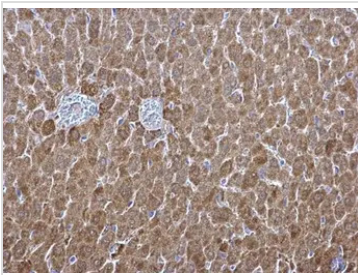
**DATA IMAGES**

**GTX100043 IHC-P Image**

Immunohistochemical analysis of paraffin-embedded gastric N87 xenograft, using ALDH1A1(GTX100043) antibody at 1:100 dilution.

Antigen Retrieval: Trilogy™ (EDTA based, pH 8.0) buffer, 15min


**GTX100043 ICC/IF Image**

Immunofluorescence analysis of methanol-fixed HeLa, using ALDH1A1(GTX100043) antibody at 1:200 dilution.

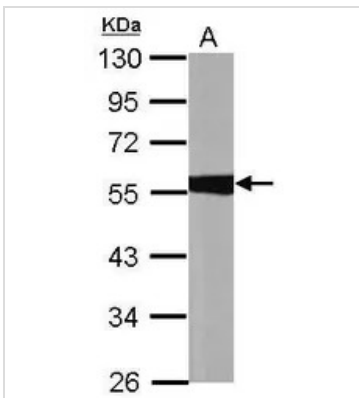

**GTX100043 IHC-P Image**

ALDH1A1 antibody [C3], C-term detects ALDH1A1 protein at cytosol on mouse liver by immunohistochemical analysis.

Sample: Paraffin-embedded mouse liver.

ALDH1A1 antibody [C3], C-term (GTX100043) dilution: 1:500.

Antigen Retrieval: Trilogy™ (EDTA based, pH 8.0) buffer, 15min


**GTX100043 WB Image**

Sample (30 ug of whole cell lysate)

A: A549

10% SDS PAGE

GTX100043 diluted at 1:10000



For full product information, images and publications, please visit our [website](https://www.genetex.com).