

Apolipoprotein E antibody [C2C3], C-term

Cat. No. GTX100053

Host	Rabbit
Clonality	Polyclonal
Isotype	IgG
Applications	WB, ICC/IF, IHC-P, IHC-Fr, IP, ELISA, Sandwich ELISA
Reactivity	Human

References (5)

★★★★★ Review (2)

Package

100 µl, 25 µl

Applications

Application Note

*Optimal dilutions/concentrations should be determined by the researcher.

Suggested dilution	Recommended dilution
WB	1:500-1:20000
ICC/IF	1:100-1:1000
IHC-P	1:100-1:1000
IHC-Fr	Assay dependent
IP	1:100-1:500
ELISA	1:1000-1:10000
Sandwich ELISA	Assay dependent

Note : Capture : GTX635889 / GTX635891, Detection : GTX100053

Not tested in other applications.

Calculated MW 36 kDa. ([Note](#))

Properties

Form	Liquid
Buffer	PBS, 20% Glycerol
Preservative	0.025% ProClin 300
Storage	Store as concentrated solution. Centrifuge briefly prior to opening vial. For short-term storage (1-2 weeks), store at 4°C. For long-term storage, aliquot and store at -20°C or below. Avoid multiple freeze-thaw cycles.
Concentration	0.66 mg/ml (Please refer to the vial label for the specific concentration.)
Immunogen	Carrier-protein conjugated synthetic peptide encompassing a sequence within the C-terminus region of human Apolipoprotein E. The exact sequence is proprietary.
Purification	Purified by antigen-affinity chromatography.



For full product information, images and publications, please visit our [website](#).

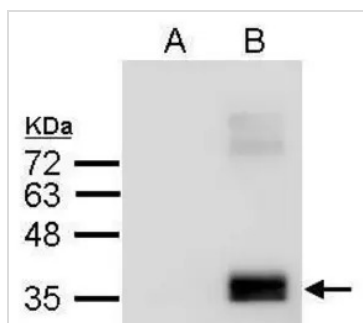
Conjugation

Unconjugated

Note

For laboratory research use only. Not for any clinical, therapeutic, or diagnostic use in humans or animals. Not for animal or human consumption.

Purchasers shall not, and agree not to enable third parties to, analyze, copy, reverse engineer or otherwise attempt to determine the structure or sequence of the product.

DATA IMAGES

GTx100053 WB Image

Sample (2.5 µg of whole cell lysate)

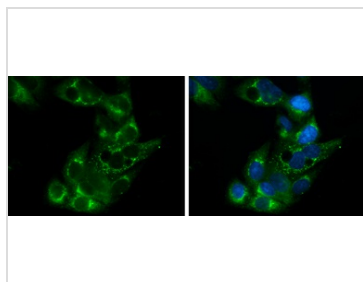
A: Conditional medium from human primary preadipocyte

B: Conditional medium from differentiated human primary preadipocyte

12% SDS PAGE

GTx100053 diluted at 1:2000

The HRP-conjugated anti-rabbit IgG antibody (GTx213110-01) was used to detect the primary antibody.

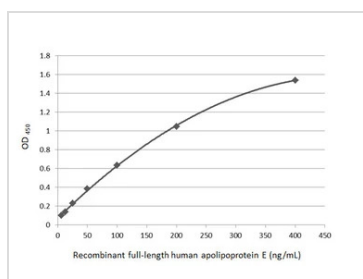

GTx100053 ICC/IF Image

Apolipoprotein E antibody [C2C3], C-term detects Apolipoprotein E protein at cytoplasm by immunofluorescent analysis.

Sample: HepG2 cells were fixed in 4% paraformaldehyde at RT for 15 min.

Green: Apolipoprotein E stained by Apolipoprotein E antibody [C2C3], C-term (GTx100053) diluted at 1:500.

Blue: Hoechst 33342 staining.


GTx100053 ELISA Image

Sandwich ELISA detection of recombinant full-length human apolipoprotein E using Apolipoprotein E antibody [GT1627] (GTx635891) as capture antibody at concentration of 5 µg/mL and Apolipoprotein E antibody [C2C3], C-term (GTx100053) as detection antibody at concentration of 1 µg/mL. Rabbit IgG antibody (HRP) (GTx213110-01) was diluted at 1:10000 and used to detect the primary antibody.


 For full product information, images and publications, please visit our [website](https://www.genetex.com).