

Androgen Receptor antibody [N1], N-term

Cat. No. GTX100056

Host	Rabbit
Clonality	Polyclonal
Isotype	IgG
Applications	WB, ICC/IF, IHC-P
Reactivity	Human, Mouse

References (3)

Package

100 µl, 25 µl

Applications

Application Note

*Optimal dilutions/concentrations should be determined by the researcher.

Suggested dilution	Recommended dilution
WB	1:500-1:3000
ICC/IF	1:100-1:1000
IHC-P	1:100-1:1000

Not tested in other applications.

Calculated MW 99 kDa. ([Note](#))

Properties

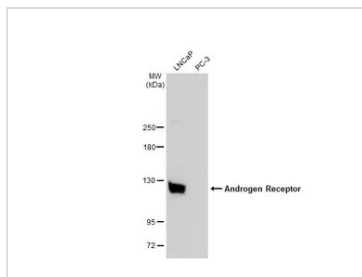
Form	Liquid
Buffer	PBS, 1% BSA, 20% Glycerol
Preservative	0.025% ProClin 300
Storage	Store as concentrated solution. Centrifuge briefly prior to opening vial. For short-term storage (1-2 weeks), store at 4°C. For long-term storage, aliquot and store at -20°C or below. Avoid multiple freeze-thaw cycles.
Concentration	0.47 mg/ml (Please refer to the vial label for the specific concentration.)
Immunogen	Carrier-protein conjugated synthetic peptide encompassing a sequence within the N-terminus region of human Androgen Receptor. The exact sequence is proprietary.
Purification	Purified by antigen-affinity chromatography.
Conjugation	Unconjugated

Note

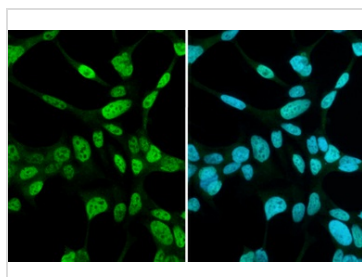
For laboratory research use only. Not for any clinical, therapeutic, or diagnostic use in humans or animals. Not for animal or human consumption.

Purchasers shall not, and agree not to enable third parties to, analyze, copy, reverse engineer or otherwise attempt to determine the structure or sequence of the product.

For full product information, images and publications, please visit our [website](#).

DATA IMAGES

GTx100056 WB Image

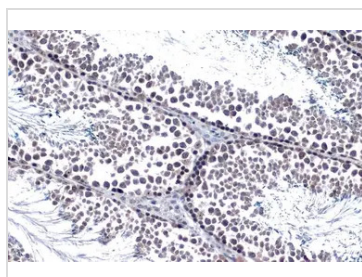
Various whole cell extracts (30 µg) were separated by 5% SDS-PAGE, and the membrane was blotted with Androgen Receptor antibody [N1], N-term (GTx100056) diluted at 1:500. The HRP-conjugated anti-rabbit IgG antibody (GTx213110-01) was used to detect the primary antibody.


GTx100056 ICC/IF Image

Androgen Receptor antibody [N1], N-term detects Androgen Receptor protein at nucleus by immunofluorescent analysis.

Sample: LNCaP cells were fixed in 4% paraformaldehyde at RT for 15 min.

Green: Androgen Receptor stained by Androgen Receptor antibody [N1], N-term (GTx100056) diluted at 1:2000.


GTx100056 IHC-P Image

Androgen Receptor antibody [N1], N-term detects Androgen Receptor protein at cytoplasm and nucleus by immunohistochemical analysis.

Sample: Paraffin-embedded mouse testis.

Androgen Receptor stained by Androgen Receptor antibody [N1], N-term (GTx100056) diluted at 1:500.

Antigen Retrieval: Citrate buffer, pH 6.0, 15 min


GTx100056 IHC-P Image

Androgen Receptor antibody [N1], N-term detects Androgen Receptor protein at nucleus on mouse prostate by immunohistochemical analysis.

Sample: Paraffin-embedded mouse prostate.

Androgen Receptor antibody [N1], N-term (GTx100056) dilution: 1:500.

Antigen Retrieval: Trilogy™ (EDTA based, pH 8.0) buffer, 15min



For full product information, images and publications, please visit our [website](https://www.genetex.com).