

## Bcl-2 antibody [N1N2], N-term

Cat. No. GTX100064

Host	Rabbit
Clonality	Polyclonal
Isotype	IgG
Application	WB, ICC/IF, IHC-P
Reactivity	Human, Mouse, Rat, Zebrafish, Cat, Dog

Reference ( 141 )

★★★★☆ Review ( 5 )

Package

100 µl, 25 µl

## PRODUCT

## Summary

BCL-2 antibody recognizes BCL-2 protein. BCL-2 (26 kDa) regulates mitochondrial dynamics, is involved in the regulation of mitochondrial fusion and fission, and is associated with apoptosis. Abnormal expression of BCL-2 protein is linked to various cancers, autoimmunity, and psychiatric disorders. This BCL-2 antibody is a widely published rabbit polyclonal validated for multiple applications.

## APPLICATION

## Application Note

\*Optimal dilutions/concentrations should be determined by the researcher.

Suggested dilution	Recommended dilution
WB	1:500-1:3000
ICC/IF	1:100-1:1000
IHC-P	1:100-1:1000

Not tested in other applications.

**Calculated MW** 26 kDa. ( [Note](#) )

## PROPERTIES

Form	Liquid
Buffer	PBS, 1% BSA, 20% Glycerol
Preservative	0.025% ProClin 300
Storage	Store as concentrated solution. Centrifuge briefly prior to opening vial. For short-term storage (1-2 weeks), store at 4°C. For long-term storage, aliquot and store at -20°C or below. Avoid multiple freeze-thaw cycles.
Concentration	0.2 mg/ml (Please refer to the vial label for the specific concentration.)
Immunogen	Carrier-protein conjugated synthetic peptide encompassing a sequence within the N-terminus region of human Bcl-2. The exact sequence is proprietary.
Purification	Purified by antigen-affinity chromatography.
Conjugation	Unconjugated



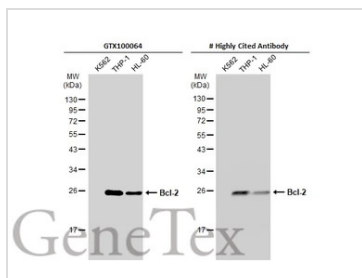
For full product information, images and publications, please visit our [website](#).

Date 2024 / 05 / 02 Page 1 of 2

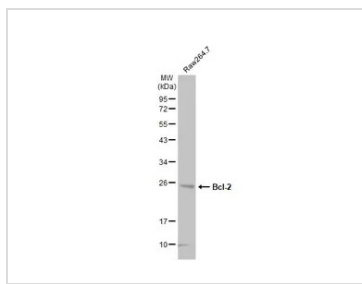
For laboratory research use only. Not for any clinical, therapeutic, or diagnostic use in humans or animals. Not for animal or human consumption.

**Note**

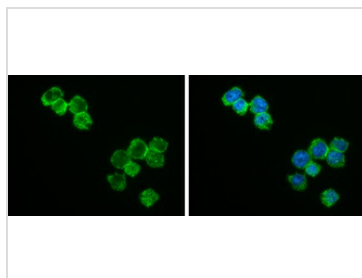
Purchasers shall not, and agree not to enable third parties to, analyze, copy, reverse engineer or otherwise attempt to determine the structure or sequence of the product.

**DATA IMAGES**

**GTX100064 WB Image**

Various whole cell extracts (30 µg) were separated by 12% SDS-PAGE, and the membrane was blotted with Bcl-2 antibody [N1N2], N-term (GTX100064) diluted at 1:500. The HRP-conjugated anti-rabbit IgG antibody (GTX213110-01) was used to detect the primary antibody.


**GTX100064 WB Image**

Whole cell extract (30 µg) was separated by 12% SDS-PAGE, and the membrane was blotted with Bcl-2 antibody [N1N2], N-term (GTX100064) diluted at 1:1000. The HRP-conjugated anti-rabbit IgG antibody (GTX213110-01) was used to detect the primary antibody.

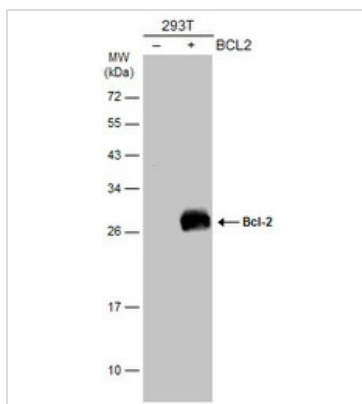

**GTX100064 ICC/IF Image**

Bcl-2 antibody [N1N2], N-term detects Bcl-2 protein at cytoplasm and nucleus by immunofluorescent analysis.

Sample: THP-1 cells were fixed in 4% paraformaldehyde at RT for 15 min.

Green: Bcl-2 stained by Bcl-2 antibody [N1N2], N-term (GTX100064) diluted at 1:500.

Blue: Fluoroshield with DAPI (GTX30920).


**GTX100064 WB Image**

Non-transfected (–) and transfected (+) 293T whole cell extracts (30 µg) were separated by 12% SDS-PAGE, and the membrane was blotted with Bcl-2 antibody [N1N2], N-term (GTX100064) diluted at 1:500. The HRP-conjugated anti-rabbit IgG antibody (GTX213110-01) was used to detect the primary antibody.



For full product information, images and publications, please visit our [website](https://www.genetex.com).