

# Human GTF2H5 protein, His tag

**Cat. No. GTX100076-pro**
**Species** Human

**Package**

100 µg, 25 µg

## PROPERTIES

**Form** Liquid

**Buffer** PBS, 0.1% SDS

**Preservative** No Preservative

**Storage** Store as concentrated solution. Centrifuge briefly prior to opening vial. Aliquot and store at -20°C or below. Avoid multiple freeze-thaw cycles.

**Concentration** Batch dependent (Please refer to the vial label for the specific concentration.)

**Region/Sequence** N-terminal His tagged full length protein of NP\_997001

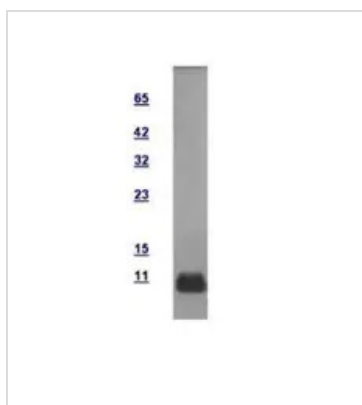
**Expression System** E. coli

**Purity** >95%

**Conjugation** Unconjugated

**Note** For In vitro laboratory use only. Not for any clinical, therapeutic, or diagnostic use in humans or animals. Not for animal or human consumption.

## DATA IMAGES



### GTX100076-pro Image

10µg of GTX100076-pro GTF2H5 recombinant protein analyzed using SDS-PAGE and stained with coomassie blue and captured by black and white camera.


For full product information, images and publications, please visit our [website](#).