

Human RPA14 protein, His tag

Cat. No. GTX100088-pro

Species	Human
---------	-------

Package

100 µg, 25 µg

PROPERTIES

Form	Liquid
------	--------

Buffer	PBS, 0.1% SDS
--------	---------------

Preservative	No Preservative
--------------	-----------------

Storage	Store as concentrated solution. Centrifuge briefly prior to opening vial. Aliquot and store at -20°C or below. Avoid multiple freeze-thaw cycles.
---------	---

Concentration	Batch dependent (Please refer to the vial label for the specific concentration.)
---------------	--

Region/Sequence	N-terminal His tagged full length protein (Met removed) of NP_002938
-----------------	--

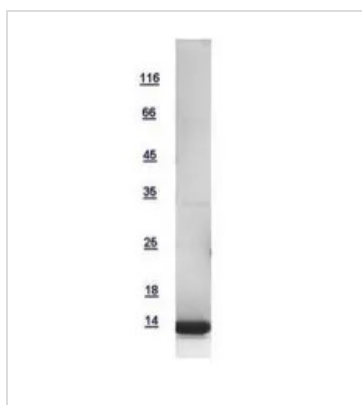
Expression System	E. coli
-------------------	---------

Purity	>95%
--------	------

Conjugation	Unconjugated
-------------	--------------

Note	For In vitro laboratory use only. Not for any clinical, therapeutic, or diagnostic use in humans or animals. Not for animal or human consumption.
------	---

DATA IMAGES



GTX100088-pro Image

10µg of GTX100088-pro RPA14 recombinant protein analyzed using SDS-PAGE and stained with coomassie blue and captured by black and white camera.



For full product information, images and publications, please visit our [website](#).