

## beta Tubulin 2 antibody

**Cat. No. GTX100117**

<b>Host</b>	Rabbit
<b>Clonality</b>	Polyclonal
<b>Isotype</b>	IgG
<b>Applications</b>	WB, ICC/IF, IHC-P
<b>Reactivity</b>	Human, Mouse, Rat, Drosophila

References ( 2 )

★★★★☆ Review ( 1 )

Package

100 µl, 25 µl

## Applications

**Application Note**

\*Optimal dilutions/concentrations should be determined by the researcher.

Suggested dilution	Recommended dilution
WB	1:500-1:3000
ICC/IF	1:100-1:1000
IHC-P	1:100-1:1000

Not tested in other applications.

**Calculated MW** 50 kDa. ( [Note](#) )

## Properties

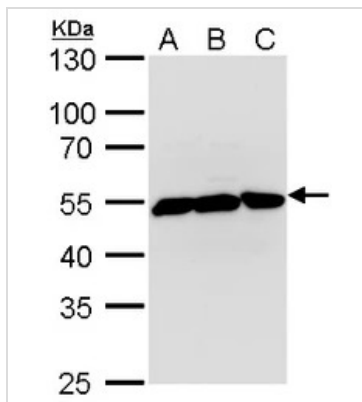
<b>Form</b>	Liquid
<b>Buffer</b>	PBS, 20% Glycerol
<b>Preservative</b>	0.01% Thimerosal
<b>Storage</b>	Store as concentrated solution. Centrifuge briefly prior to opening vial. For short-term storage (1-2 weeks), store at 4°C. For long-term storage, aliquot and store at -20°C or below. Avoid multiple freeze-thaw cycles.
<b>Concentration</b>	1 mg/ml (Please refer to the vial label for the specific concentration.)
<b>Immunogen</b>	Recombinant protein encompassing a sequence within the center region of human beta Tubulin 2. The exact sequence is proprietary.
<b>Purification</b>	Purified by antigen-affinity chromatography.
<b>Conjugation</b>	Unconjugated
<b>Note</b>	For laboratory research use only. Not for any clinical, therapeutic, or diagnostic use in humans or animals. Not for animal or human consumption.  Purchasers shall not, and agree not to enable third parties to, analyze, copy, reverse engineer or otherwise attempt to determine the structure or sequence of the product.



For full product information, images and publications, please visit our [website](#).

Date 2026 / 05 / 05 Page 1 of 2

DATA IMAGES



**GTX100117 WB Image**

beta Tubulin 2 antibody detects beta Tubulin 2 protein by Western blot analysis.

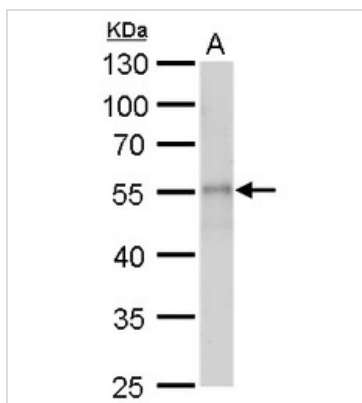
A. 30 µg Jurkat whole cell lysate/extract

B. 30 µg Raji whole cell lysate/extract

C. 30 µg NCI-H929 whole cell lysate/extract

10 % SDS-PAGE

beta Tubulin 2 antibody (GTX100117) dilution: 1:5000



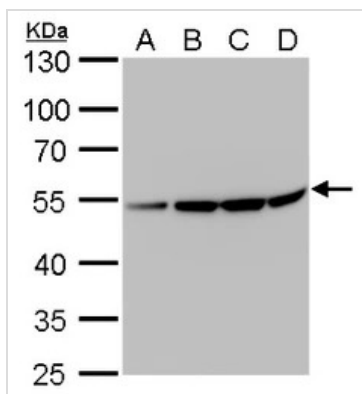
**GTX100117 WB Image**

beta Tubulin 2 antibody detects beta Tubulin 2 protein by Western blot analysis.

A. 30 µg drosophila lysate/extract

10 % SDS-PAGE

beta Tubulin 2 antibody (GTX100117) dilution: 1:2000



**GTX100117 WB Image**

beta Tubulin 2 antibody detects beta Tubulin 2 protein by Western blot analysis.

A. 30 µg U87-MG whole cell lysate/extract

B. 30 µg SK-N-SH whole cell lysate/extract

C. 30 µg IMR32 whole cell lysate/extract

D. 30 µg SK-N-AS whole cell lysate/extract

10 % SDS-PAGE

beta Tubulin 2 antibody (GTX100117) dilution: 1:10000



For full product information, images and publications, please visit our [website](#).